



2023 Kobelco SK140 Excavator 14 Ton 860 Hours Original Components

Our Product Introduction

for more products please visit us on used-crawlerexcavator.com

Basic Information

- Place of Origin: Japan
- Minimum Order Quantity: 1
- Price: \$18,000-22,000



Product Specification

- Year: 2023
- Operating Weight: 13200KG
- Bucket Capacity: 0.57m³
- Machine Weight: 14000 KG
- Hydraulic Cylinder: Original
- Hydraulic Pump: Original
- Hydraulic Valve: Original
- Engine Brand: MITSUBISHI
- Power: 74KW
- Working Hours: 860
- Core Components: Pressure Vessel, Motor, Bearing, Pump, Gearbox, Engine, PLC
- Highlight: 2023 Kobelco SK140 excavator, 14 ton excavator with warranty, used Kobelco excavator original components



More Images



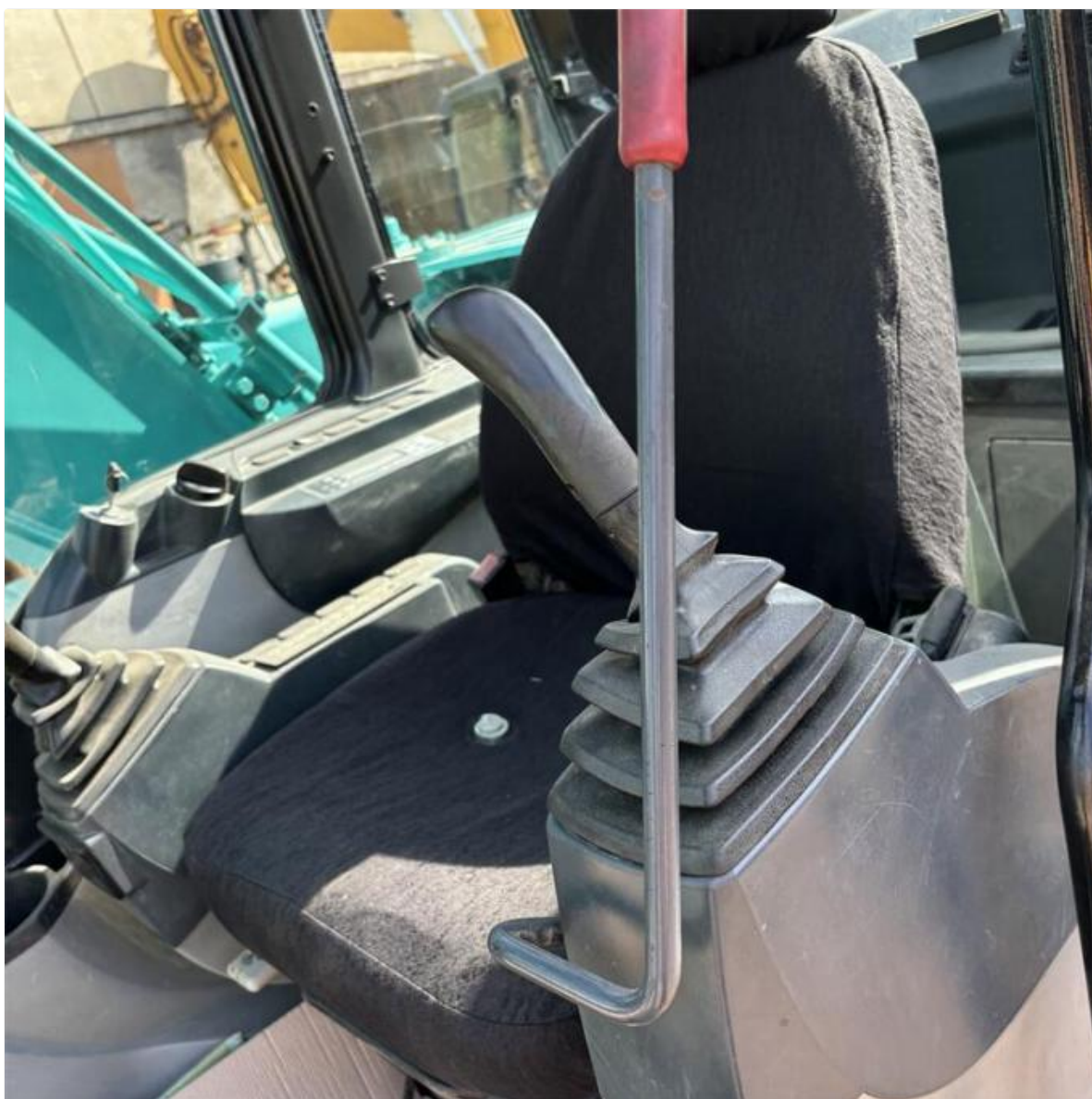
Original Japan Kobelco SK140 Medium Excavator - Low Price Crawler Excavators Used 14ton

Product Specifications

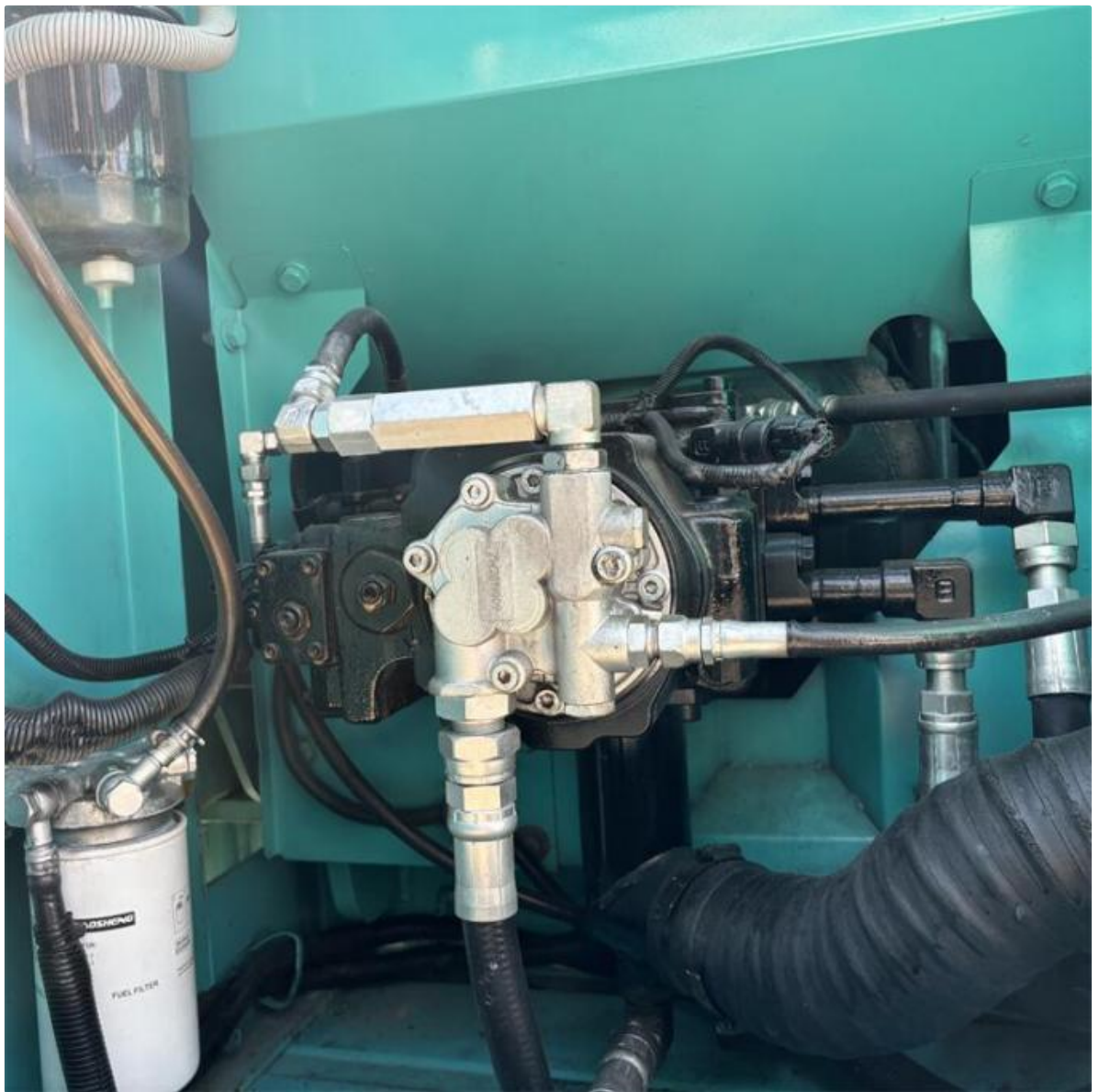
Year	2023
Operating Weight	13200KG
Bucket capacity	0.57m³
Machine Weight	14000 KG
Hydraulic Cylinder Brand	Original
Hydraulic Pump Brand	Original
Hydraulic Valve Brand	Original
Engine Brand	MITSUBISHI
Power	74KW
Machinery Test Report	Provided
Video outgoing-inspection	Provided
Core Components	Pressure vessel, motor, Bearing, Pump, Gearbox, Engine, PLC
Working hours	860
Showroom Location	None

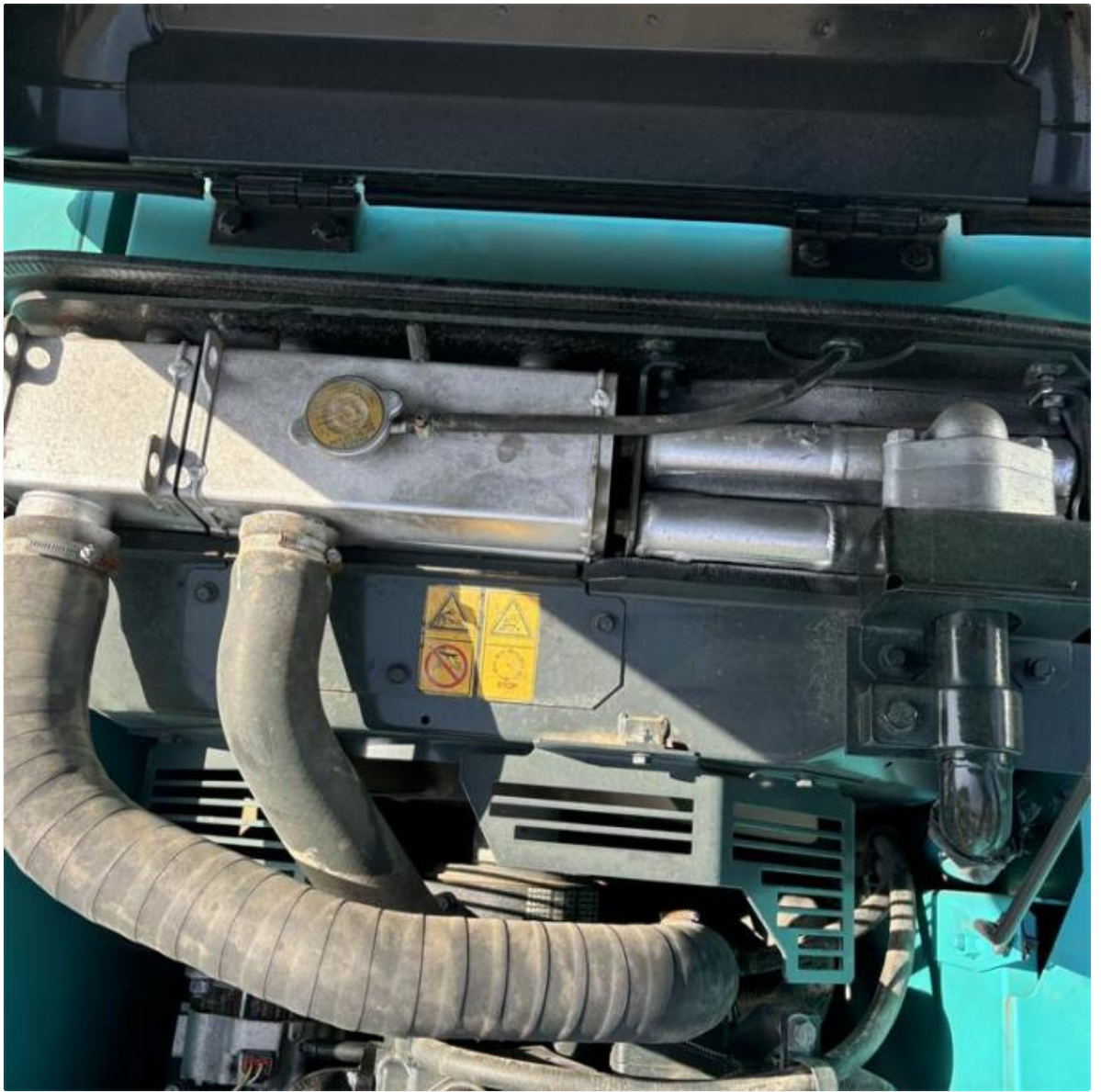
Product Images

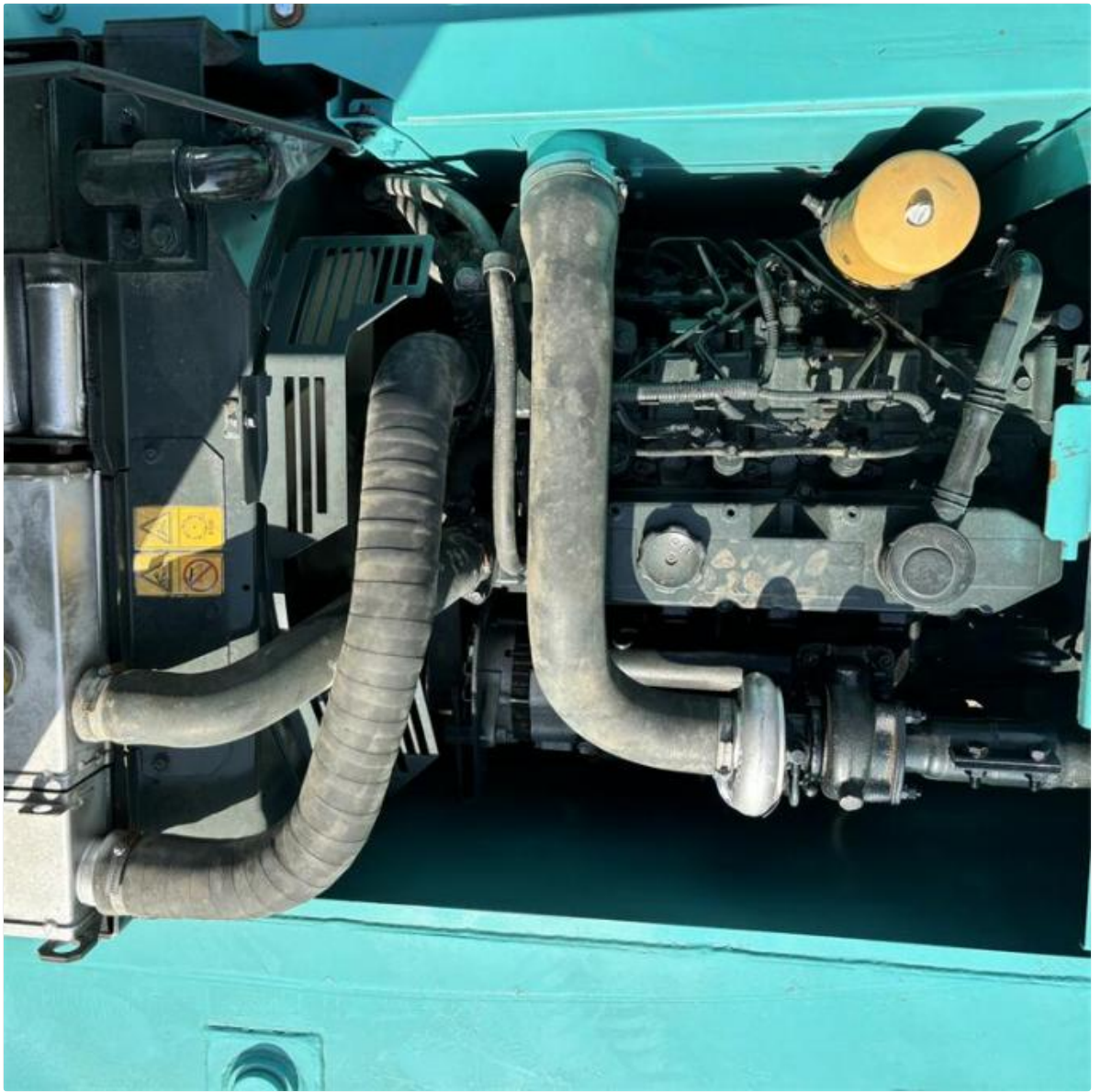


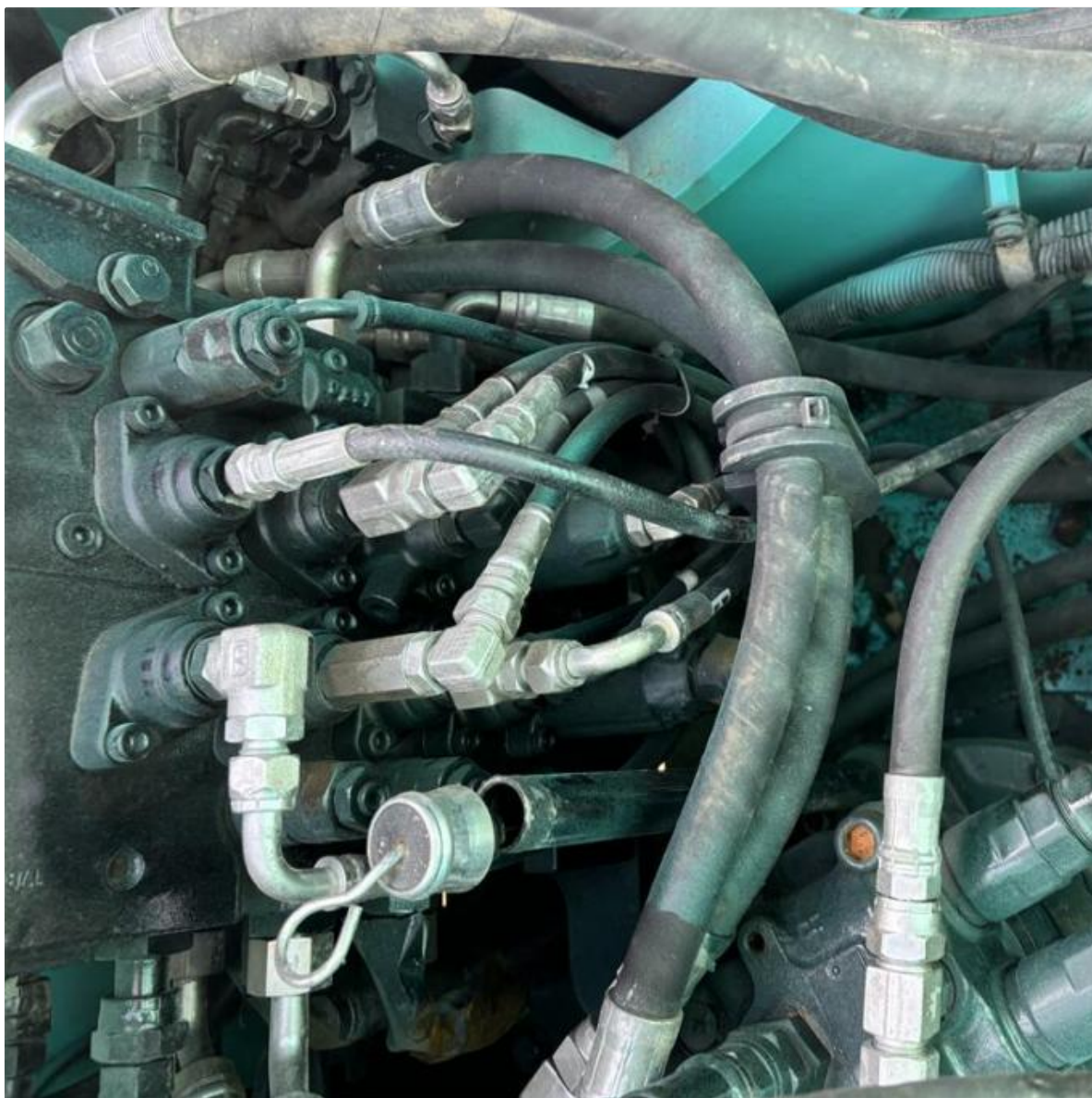




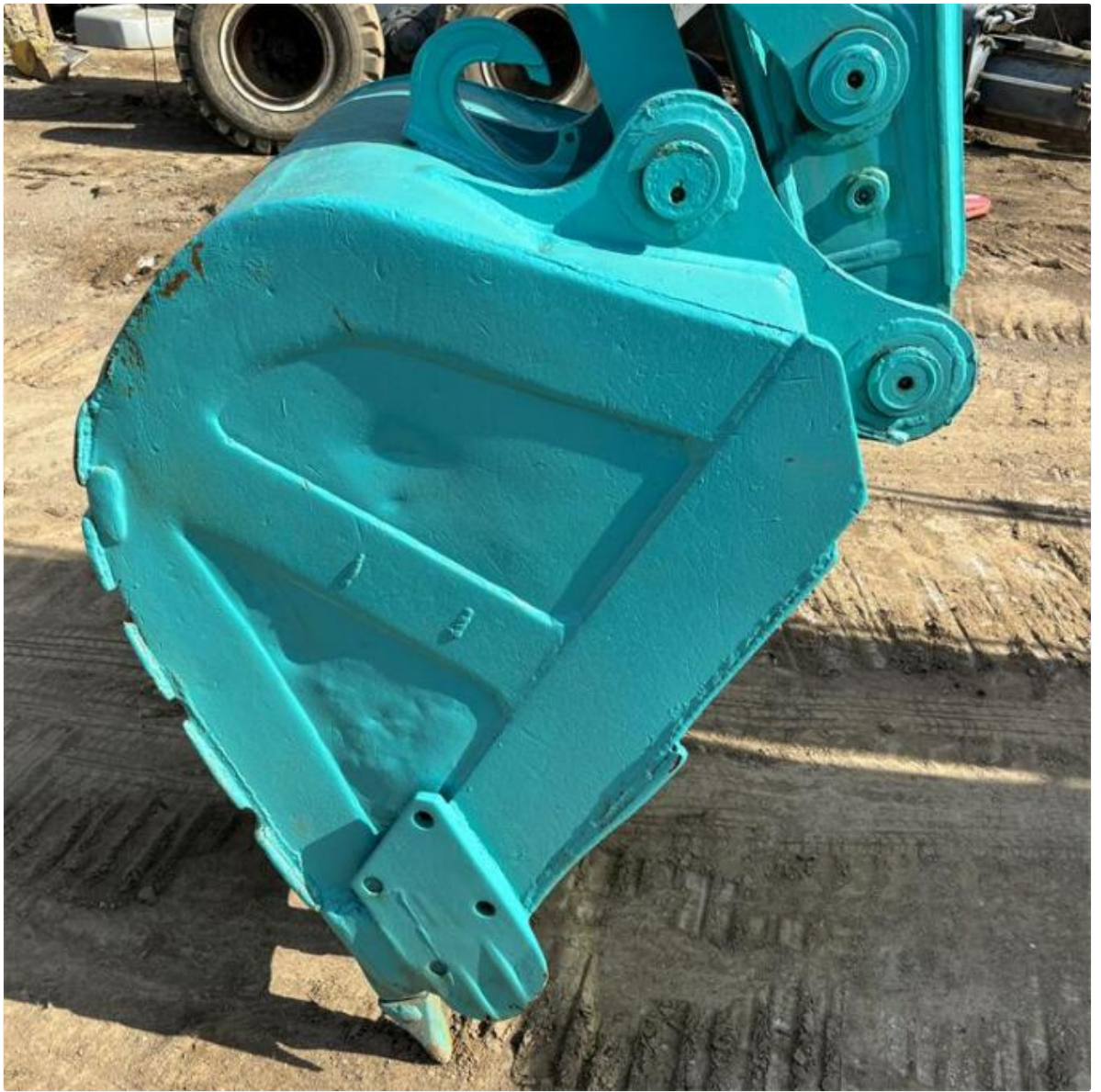














Available Excavator Models

Komatsu Used Excavators

PC20, PC30, PC35, PC40, PC50, PC55, PC56, PC60, PC70, PC75, PC78, PC100, PC110, PC120, PC128, PC130, PC138, PC150, PC160, PC200, PC210, PC220, PC228, PC240, PC270, PC300, PC350, PC360, PC400, PC450, PC460, PC490, PC650

Caterpillar Used Excavators

CAT303, CAT305, CAT305.5, CAT306, CAT307, CAT308, CAT311, CAT312, CAT313, CAT315, CAT318, CAT320, CAT323, CAT324, CAT325, CAT326, CAT329, CAT330, CAT336, CAT340, CAT345, CAT349, CAT375

Other Brands

Doosan, Sany, Hitachi, Kobelco, Hyundai, Kubota, Volvo, and other brands including QAY, CLG, Keith, Takeuchi, Sumitomo, Yanmar, IHI, SUNWARD, Yuchai, Zoomlion

Company Profile

Shanghai Kaishu Machinery Equipment Co., Ltd was established in 2017 with our own factory covering 67,000 square meters and 200 employees. As a leading used excavator supplier in China, we offer a wide range of construction machinery including used excavators, loaders, graders, bulldozers, forklifts, and cranes.

Our machines are sourced from China, the United States, Japan, South Korea and other manufacturing countries, with quality assurance as our hallmark. We maintain 3,000 units of construction machinery in stock year-round and ensure delivery within 7-30 days after payment.

Our office and team



Our stocks



Transaction Cases



Available Accessories



Pier cut



Telescopic arm



Crushed pliers



Lengthent



Clip wood



Dug up



Quick connector



Hydraulic shear



Vibration

Frequently Asked Questions

What's your payment terms and trade terms?

Generally 50% deposit and 50% balance before shipping. We can negotiate according to your orders. We accept EXW, FOB, CRF and CIF terms.

How to ship the excavators?

- Container: Cheapest and fast, though some machines may need dismantling
- Bulk cargo ship: Better for larger equipment, ships as-is
- Flat rack ship: Ideal for larger machines without dismantling
- RO RO ship: Suitable for all machines and faster delivery

Is it convenient to visit you?

You are welcome to visit us to inspect our inventory. We can arrange pickup from Shanghai Airport.



Shanghai Kaishu Machinery Equipment Co., Ltd.



15821620827



18326615374@163.com



used-crawlerexcavator.com

No.3539 Jingdong Road, Shanghai, China