



## 2022 Used Caterpillar 320CL Excavator 20Ton with 657 Hours

Our Product Introduction

for more products please visit us on [used-crawlerexcavator.com](http://used-crawlerexcavator.com)

### Basic Information

- Place of Origin: Japan
- Minimum Order Quantity: 1
- Price: \$16,800-22,800

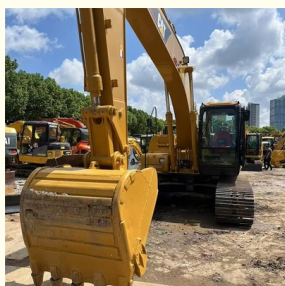


### Product Specification

- Year: 2022
- Operating Weight: 20Ton
- Bucket Capacity: 0.8m<sup>3</sup>
- Machine Weight: 20000 KG
- Hydraulic Cylinder: Original
- Hydraulic Pump: Original
- Hydraulic Valve: Original
- Engine Brand: Caterpillar
- Power: 110KW
- Working Hours: 657
- Core Components: Pressure Vessel, Motor, Bearing, Gear, Pump, Gearbox, Engine, PLC
- Excavator Model: CAT 320CL
- Excavator Type: 20 Ton Machine
- Control System: PLC



### More Images



Product Description

Used Caterpillar 320CL Excavator - 20 Ton Machine

Key Specifications

Year	2022
Operating Weight	20Ton
Bucket Capacity	0.8m³
Machine Weight	20000 KG
Hydraulic Components	Original Brand (Cylinder, Pump, Valve)
Engine	Caterpillar, 110KW
Working Hours	657
Documentation	Machinery Test Report & Video Outgoing-Inspection Provided
Core Components	Pressure vessel, motor, Bearing, Gear, Pump, Gearbox, Engine, PLC

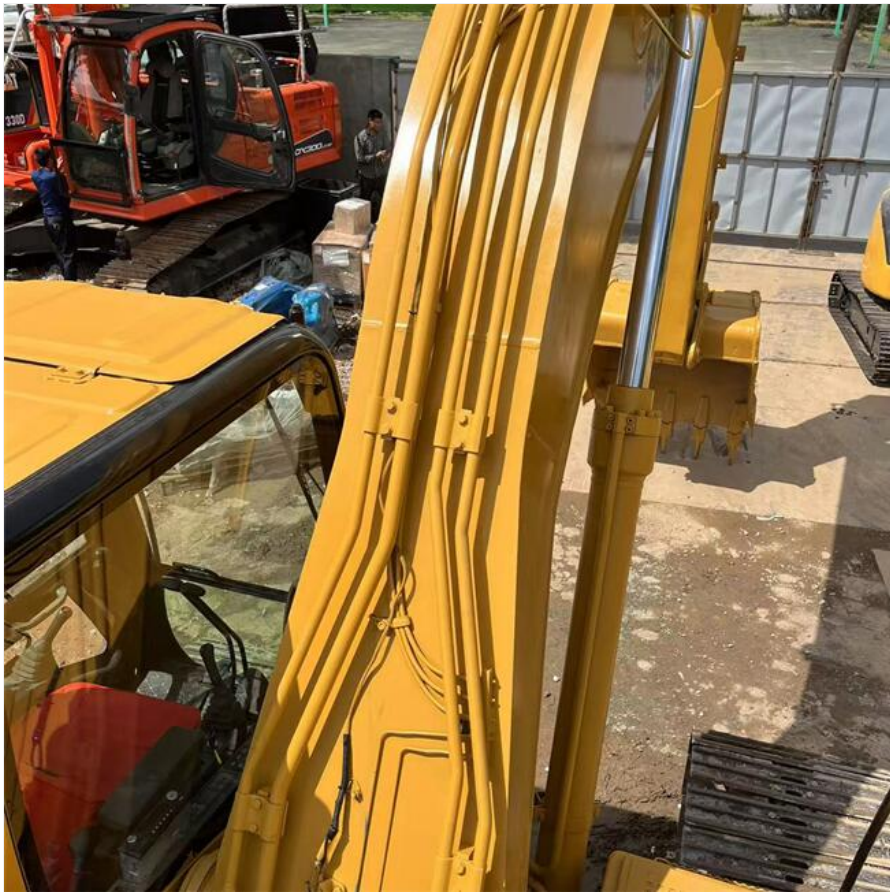
Product Images

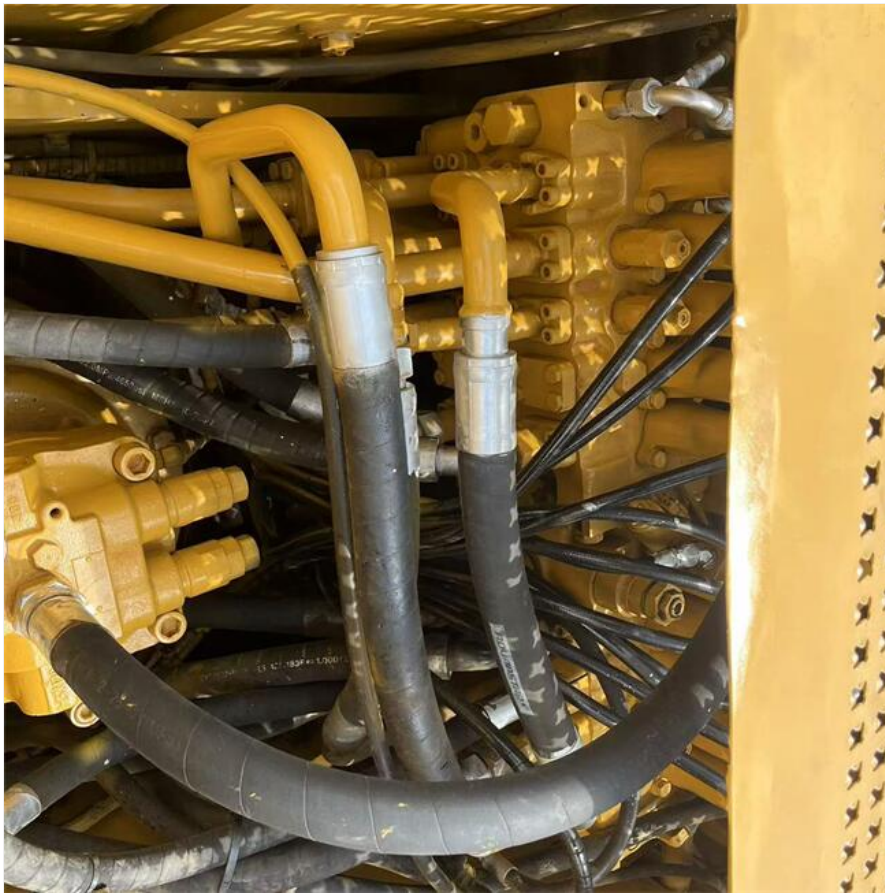












#### Available Excavator Models

**Komatsu:** PC20-PC490, PC650

**Caterpillar:** CAT303-CAT375

**Doosan:** DH(DX)35-530

**Sany:** SY16-SY365

**Hitachi:** EX50-EX200, ZX50-ZX600

**Kobelco:** SK50-SK460

**Hyundai:** R55-R420

**Kubota:** 10-185

**Volvo:** EC55-EC480

**Other Brands:** QAY, CLG, Keith, Takeuchi, etc.

#### Company Profile

**Shanghai Kaishu Machinery Equipment Co., Ltd** was established in 2017 with a 67,000 square meter factory and 200 employees. As a leading used excavator supplier in China, we maintain a large inventory of quality construction machinery including excavators, loaders, graders, bulldozers, forklifts, and cranes.

Our machines are sourced from top manufacturing countries including China, USA, Japan, and South Korea. We maintain strict quality standards and typically deliver within 7-30 days after payment.







### Frequently Asked Questions

#### What are your payment terms and trade terms?

Standard terms are 50% deposit and 50% balance before shipping, negotiable based on order size. We accept EXW, FOB, CRF and CIF terms.

#### How do you ship the excavators?

We offer multiple shipping options: Container (most economical), Bulk cargo (for large equipment), Flat rack (no disassembly needed), and RO RO (fastest for all machine sizes).

#### Is it convenient to visit your facility?

Visitors are welcome to inspect our inventory. We provide airport pickup service from Shanghai for your convenience.



**Shanghai Kaishu Machinery Equipment Co., Ltd.**



15821620827



18326615374@163.com



used-crawlerexcavator.com

No.3539 Jingdong Road, Shanghai, China