



## 2023 CAT D6G Bulldozer 16320KG 119kW Original Components

Our Product Introduction

for more products please visit us on [used-crawlerexcavator.com](http://used-crawlerexcavator.com)

### Basic Information

- Place of Origin: United States
- Minimum Order Quantity: 1
- Price: \$18,000-21,000



### Product Specification

- Year: 2023
- Operating Weight: 16320KG
- Bucket Capacity: 3.27m³
- Machine Weight: 16320 KG
- Engine Brand: CAT
- Power: 119kW
- Working Hours: 688
- Transport Length: 5.162 M
- Transport Width: 3.035 M
- Transport Height: 3.112 M
- Engine Type: 3306T
- Hydraulic Cylinder: ORIGINAL
- Hydraulic Pump: ORIGINAL
- Hydraulic Valve: ORIGINAL
- Core Components: Pressure Vessel, Motor, Bearing, Gear,



### More Images



Product Description

Japan Used CAT Caterpillar D6G Dozer / Cat D6H D6D D6G D7 D7G D7R D7H D8K Bulldozer D7G

Product Specifications

|                              |   |
|------------------------------|---|
| Year                         | 2023  |
| Operating Weight             | 16,320 KG   |
| Bucket Capacity              | 3.27m³  |
| Power                        | 119kW   |
| Engine Type                  | 3306T   |
| Working Hours                | 688   |
| Transport Dimensions (L×W×H) | 5.162 m × 3.035 m × 3.112 m                                       |
| Core Components              | Pressure vessel, motor, Bearing, Gear, Pump, Gearbox, Engine, PLC |
| Hydraulic Components         | ORIGINAL (Cylinder, Pump, Valve)                                  |
| Documentation                | Machinery Test Report and Video Outgoing-Inspection Provided      |

Product Images



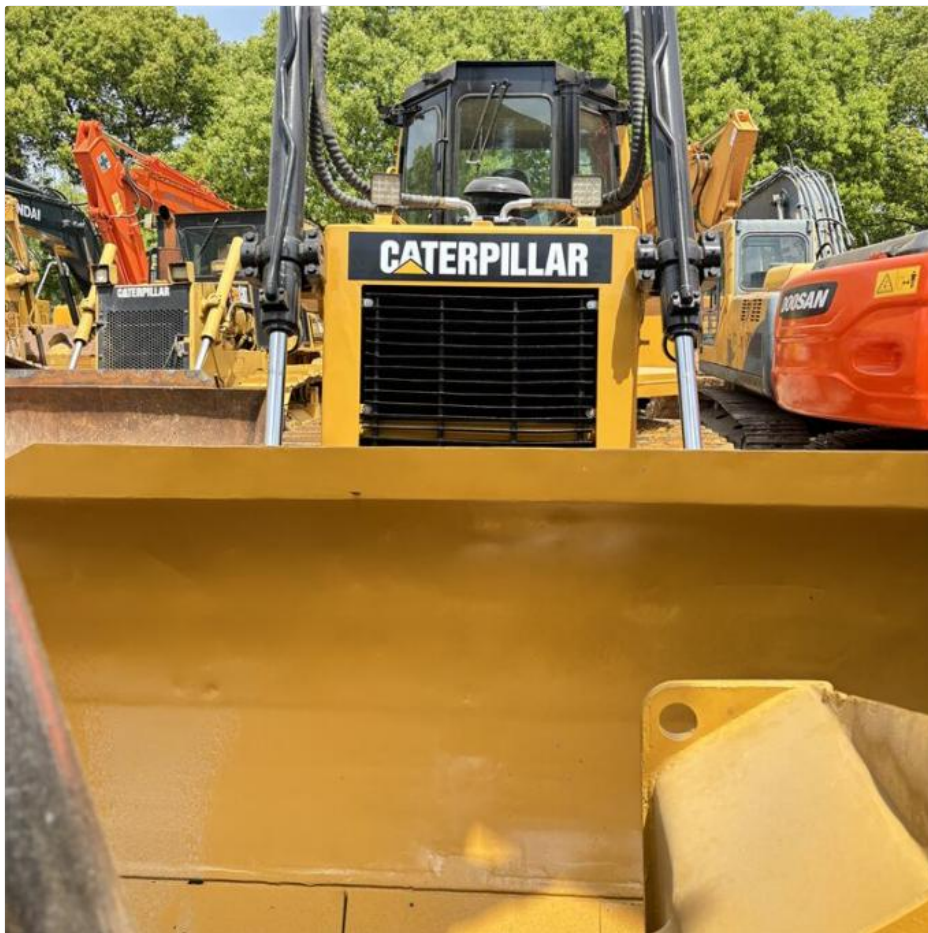














## Available Models

We offer a wide range of used excavators including:

- Komatsu: PC20-PC490 series
- Caterpillar: CAT303-CAT375 series
- Doosan: DH/DX35-DX530 series
- Sany: SY16-SY365 series
- Hitachi: EX50-EX200, ZX50-ZX600 series
- Kobelco: SK50-SK460 series
- Hyundai: R55-R420 series
- Kubota: 10-185 series
- Volvo: EC55-EC480 series
- Other brands: QAY, CLG, Keith, Takeuchi, etc.

## Company Profile

**Shanghai Kaishu Machinery Equipment Co., Ltd** is a leading used excavator supplier established in 2017 with a 67,000 square meter factory and 200 employees. We specialize in quality used construction machinery including excavators, loaders, graders, bulldozers, forklifts, and cranes. Our machines are sourced from top manufacturing countries (China, USA, Japan, Korea) and undergo rigorous quality testing. With 3,000+ units in stock and 7-30 day delivery after payment, we serve global clients with 24/7 support.

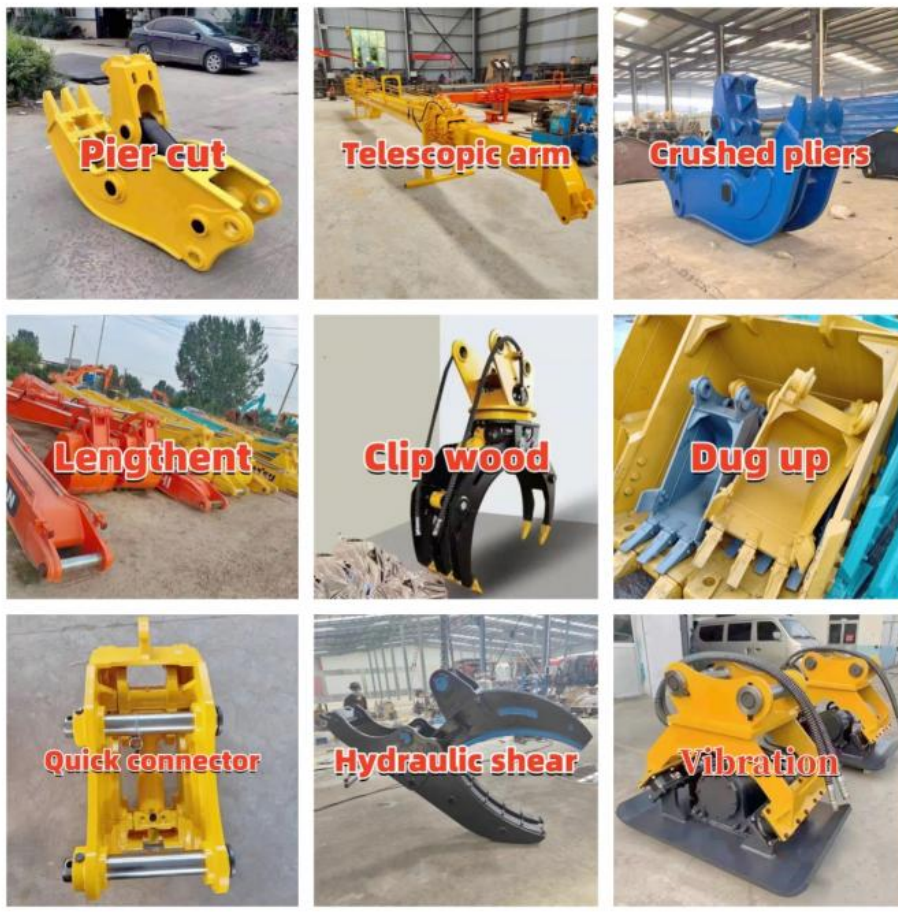












### Frequently Asked Questions

#### What are your payment terms and trade terms?

Standard terms are 50% deposit and 50% balance before shipping, negotiable based on order size. We accept EXW, FOB, CRF, and CIF terms.

#### How do you ship the excavators?

We offer multiple shipping options: container (most economical), bulk cargo ship (for large equipment), flat rack ship (no dismantling required), and RO RO ship (fastest for all machine sizes).

#### Can I visit your facility?

Yes, we welcome visits to inspect our inventory. We can arrange airport pickup from Shanghai for your convenience.



**Shanghai Kaishu Machinery Equipment Co., Ltd.**



15821620827



18326615374@163.com



used-crawlerexcavator.com

No.3539 Jingdong Road, Shanghai, China