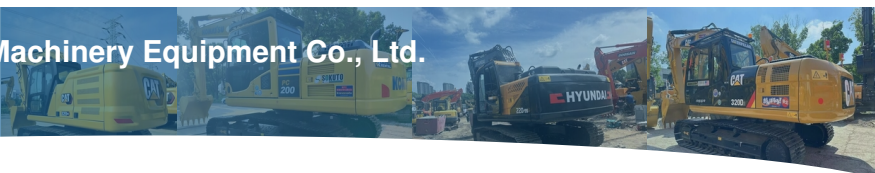




Shanghai Kaishu Machinery Equipment Co., Ltd.

[used-crawlerexcavator.com](http://used-crawlerexcavator.com)



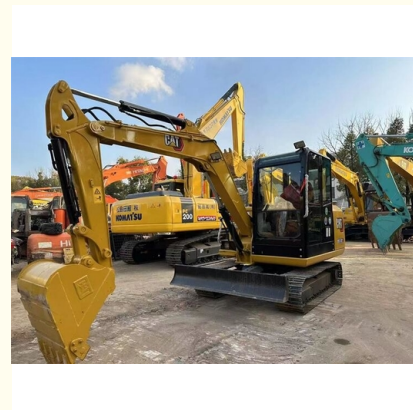
## Crawler Excavator With Caterpillar Engine And Max Excavation Height Of 3860 Mm

Our Product Introduction

more products please visit us on [used-crawlerexcavator.com](http://used-crawlerexcavator.com)

### Basic Information

- Place of Origin: Japan
- Brand Name: Cat
- Model Number: 323D3
- Price: \$22,000.00/units 1-3 units



### Product Specification

- Product Name: Good Condition Japan Original Mini Used Caterpillar Cat 305.5 Hydraulic Crawler Excavator
- Max Bucket Loading Weight: 0.22m<sup>3</sup>
- Machine Weight: 5000 KG
- Max Excavation Height: 3860 Mm
- Machinery Test Report: Provided
- Hydraulic Cylinder Brand: Original
- Hydraulic Valve Brand: Original
- Max Excavation Radius: 2700 Mm
- Highlight: **3860 mm Crawler Excavator, Crawler Excavator with Caterpillar Engine**

## Product Description

### Product Description:

With a Max Digging Depth of 3740 mm, this CAT Excavator can reach deeper areas for excavation work. Its Core Components include a Pressure Vessel, Motor, Bearing, Gear, Pump, Gearbox, Engine, and PLC, ensuring durability and high performance. One notable feature of this used CAT Excavator is its Hydraulic Valve Brand, which is Original. This ensures consistent and reliable performance, even after extended use.

The CAT Excavator Engine is also a standout feature of this product. It is known for its powerful and efficient performance, making it a trusted brand in the construction industry.

When it comes to Excavator Components, this used CAT Excavator is a great option. It is built with high-quality materials and components, ensuring that it can withstand the demands of any construction job.

Overall, this used CAT Excavator is a reliable and efficient option for any construction project. With its impressive specifications and durable components, it is sure to get the job done.

### Features:

Product Name: Good Condition Japan Original mini Used Caterpillar Cat 305.5 Hydraulic Crawler Excavator

Hydraulic Cylinder Brand: Original

Hydraulic Valve Brand: Original

Product Category: Used Cat Excavator

Engine: C2.4 DI CAT Excavator Engine

Heavy Duty Excavator

Air Cleaner Excavator

### Technical Parameters:

|                           |   |
|---------------------------|---|
| Product Name:             | Good Condition Japan Original mini Used Caterpillar Cat 305.5 Hydraulic Crawler Excavator |
| Power:                    | 34.1KW  |
| Crawler Excavator NEW :   | No  |
| Hydraulic Cylinder Brand: | Original  |
| Hydraulic Pump Brand:     | Original  |
| Bucket Capacity:          | 0.22m <sup>3</sup>  |
| Max digging depth:        | 3740 mm   |
| Machine Weight:           | 5000 KG   |
| Operating Weight:         | 5350 KG   |
| Excavator Components:     | Pressure Vessel, Motor, Bearing, Gear, Pump, Gearbox, Engine, PLC                         |
| Heavy Duty Excavator:     | Yes   |

### Applications:

Manufactured in Japan, this excavator boasts a brand name that is known for producing high-quality and reliable equipment. The Cat 323D3 model is a standout in its class, providing unmatched performance and durability. With only 850 working hours, this excavator is nearly new and ready to get to work.

At a price of \$22,000.00 per unit for 1-3 units, the Cat excavator is an affordable investment that will pay dividends for years to come. The purchase also includes a video outgoing-inspection, providing peace of mind that you are getting a quality product.

The excavator's operating weight of 5350 KG means that it can handle heavy loads with ease. And with an engine like the C2.4 DI, you can trust that the excavator will provide the power and speed needed to get the job done efficiently.

Whether you need to dig trenches, demolish buildings, or move large amounts of earth, the Cat excavator is up to the task. Its excavator components are designed for maximum efficiency and durability, ensuring that you get the most out of your investment.

So, whether you are a construction company looking to expand your fleet or a contractor in need of a reliable excavator, the used Cat excavator is the perfect solution. With its high-quality construction, powerful engine, and advanced excavator components, this excavator will provide the performance and reliability you need to get the job done right.

### Support and Services:

The Used Cat Excavator product comes with comprehensive technical support and services to ensure optimal performance and efficiency. Our team of experts is available to answer any questions and provide guidance on maintenance and repairs. We offer training programs to help operators maximize the potential of the excavator and minimize downtime. Additionally, we provide parts and service support to keep your machine running smoothly. Our goal is to provide unparalleled support throughout the life of your Cat Excavator.

## Packing and Shipping:

### Product Packaging:

The used Cat Excavator will be securely packaged in a wooden crate to ensure safe transportation.

All necessary components and accessories will be included in the crate.

The crate will be labeled with the necessary information, including the product name and destination address.

### Shipping:

The used Cat Excavator will be shipped via a reputable freight carrier.

Tracking information will be provided to the customer once the product has been shipped.

Shipping times may vary depending on the destination.

The customer is responsible for unloading the product upon delivery.

## FAQ:

### Q: What is the place of origin for the Cat Excavator?

A: The Cat Excavator is made in Japan.

### Q: What is the price of the Cat Excavator?

A: The price for 1-3 units is \$22,000.00 per unit.

### Q: What is the brand name of the excavator?

A: The brand name is Cat.

### Q: What is the model number of the excavator?

A: The model number is 323D3.

### Q: Can I purchase more than 3 units of the Cat Excavator?

A: Yes, please contact us for pricing information for orders greater than 3 units.



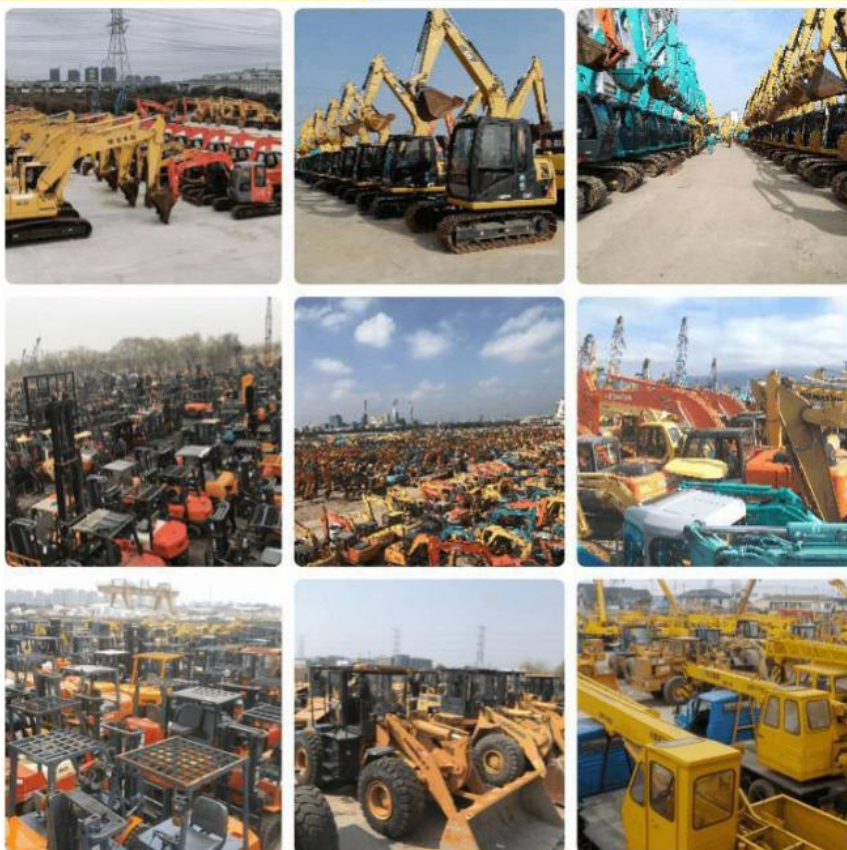




Our office and team



Our stocks



Shanghai Kaishu Machinery Equipment Co., Ltd.



15821620827



gavin\_kaishu@163.com



used-crawlerexcavator.com

