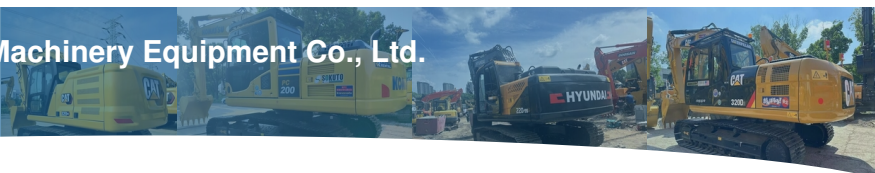




Shanghai Kaishu Machinery Equipment Co., Ltd.

used-crawlerexcavator.com



2022 Heavy Duty Excavator 850 Working Hours For Heavy-Duty Construction Jobs

Our Product Introduction

[more products please visit us on used-crawlerexcavator.com](http://used-crawlerexcavator.com)

Basic Information

- Place of Origin: Japan
- Brand Name: Cat
- Model Number: 323D3
- Price: \$22,000.00/units 1-3 units



Product Specification

- Core Components: Pressure Vessel, Motor, Bearing, Gear, Pump, Gearbox, Engine, PLC
- Engine Brand: Caterpillar
- Max Digging Depth: 3740 Mm
- Working Hours: 850
- Max Excavation Radius: 2700 Mm
- Machine Weight: 5000 KG
- Power: 34.1KW
- Product Category: Used Cat Excavator
- Highlight: **3740mm digging depth Excavator, Heavy Duty Excavator, Heavy Duty Construction Jobs Excavator**

Product Description

Product Description:

This hightop mini excavator is designed to handle a wide range of excavation tasks, from digging foundations and trenches to demolishing structures and clearing debris. With its powerful engine and durable construction, it can tackle even the toughest jobs with ease.

One of the standout features of this excavator is its high-quality hydraulic pump and cylinder, both of which are original and manufactured to Caterpillar's exacting standards. This ensures smooth and efficient operation, reducing the risk of breakdowns and downtime. At a machine weight of 5000 KG, this excavator is compact and agile enough to work in tight spaces, making it ideal for urban construction projects or jobs with limited access. It also boasts a maximum uploading height of 3560 mm, allowing you to easily load and unload materials onto trucks or other transport vehicles.

In addition to its impressive performance and functionality, this excavator is also in good condition, having been well-maintained and kept in top working order. This makes it a smart investment for any construction company or contractor looking to expand their fleet. So why wait? If you're in the market for a high-quality hydraulic crawler excavator, the Good Condition Japan Original mini Used Caterpillar Cat 305.5 Hydraulic Crawler Excavator is the perfect choice. Contact us today to learn more.

Features:

Product Name: Used Cat Excavator

Product Category: Used Cat Excavator

CAT Excavator Engine

Hydraulic Crawler Excavator

Hightop Mini Excavator

Power: 34.1KW

Max excavation radius: 2700 mm

Machinery Test Report: Provided

Video Outgoing-inspection: Provided

Technical Parameters:

| | |
|-----------------------------|---|
| Product Category | Used Cat Excavator |
| Product Name | Good Condition Japan Original mini Used Caterpillar Cat 305.5 Hydraulic Crawler Excavator |
| Engine Brand | Caterpillar |
| Year | 2022 |
| Max digging depth | 3740 mm |
| Bucket Capacity | 0.22m ³ |
| Max Bucket loading weight | 0.22m ³ |
| Video Outgoing-inspection | Provided |
| Machine Weight | 5000 KG |
| Operating Weight | 5350 KG |
| Excavator Electrical Device | Hydraulic Crawler Excavator |
| Excavator Components | Hydraulic Crawler Excavator |

Applications:

One of the standout features of this excavator is its power. With a power output of 34.1KW, it can easily handle tough jobs. The bucket capacity of the excavator is 0.22m³, which makes it perfect for digging and moving large quantities of material. Additionally, the hydraulic valve brand is original, ensuring that the excavator operates smoothly and efficiently.

There are many different occasions and scenarios where this excavator would be useful. For example, it could be used on construction sites to dig foundations or move dirt. It could also be used in landscaping projects to move soil or rocks. Another potential use is in mining or quarrying, where it could be used to extract materials from the ground.

The price of the Used Cat Excavator is \$22,000.00 for 1-3 units. This is a great value considering the quality and durability of the excavator. Whether you're a contractor, landscaper, or miner, the Used Cat Excavator Electrical Device is sure to meet your needs and exceed your expectations.

Support and Services:

Our technical support team is available to provide assistance with any issues related to your used Cat excavator. We offer a range of services including:

Diagnostic support

Repair and maintenance guidance

Parts identification and sourcing

Operator training

Warranty and service agreement support

Our team of experts has extensive knowledge of Cat excavators and can help you get the most out of your machine. Contact us for more information on how we can support you and your used Cat excavator.

Packing and Shipping:

The used Cat Excavator will be securely packed in a wooden crate to ensure safe transportation. All loose parts will be properly secured and the machine will be wrapped in protective materials to prevent any damage during shipping.

Shipping:

We offer worldwide shipping for the used Cat Excavator. The shipping cost will be calculated based on the destination and weight of the machine. The estimated delivery time will be provided upon request. Please note that any applicable customs duties or taxes are the responsibility of the buyer.

FAQ:

Q: What is the Place of Origin for the Used Cat Excavator?

A: The Place of Origin for this excavator is Japan.

Q: What is the Price for the Used Cat Excavator?

A: The Price for this excavator is \$22,000.00 per unit for 1-3 units.

Q: What is the Brand Name of the Used Cat Excavator?

A: The Brand Name for this excavator is Cat.

Q: What is the Model Number of the Used Cat Excavator?

A: The Model Number for this excavator is 323D3.

Q: Is the Used Cat Excavator in good condition?

A: All of our used excavators are inspected and serviced to ensure they are in good condition before being sold.





Our office and team



Our stocks



Shanghai Kaishu Machinery Equipment Co., Ltd.



15821620827



gavin_kaishu@163.com



used-crawlerexcavator.com

No.3539 Jingdong Road, Shanghai, China