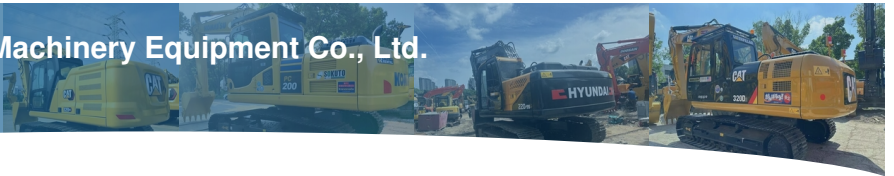




Shanghai Kaishu Machinery Equipment Co., Ltd.

used-crawlerexcavator.com



Max Bucket Loading Weight 1.85 Ton Used Cat Excavator For Construction

Our Product Introduction

more products please visit us on used-crawlerexcavator.com

Basic Information

- Place of Origin: Japan
- Brand Name: Cat
- Model Number: 323D3
- Price: \$22,000.00/units 1-3 units



Product Specification

- Machinery Test Report: Provided
- Core Components: Pressure Vessel, Motor, Bearing, Gear, Pump, Gearbox, Engine, PLC
- Video Outgoing-inspection: Provided
- Engine: 3066 ATAAC
- Machine Weight: 20000 KG
- Max Unloading Height: 3560 Mm
- Operating Weight: 21115 KG
- Hydraulic Valve Brand: Original
- Highlight: **Max Bucket Used Cat Excavator,
Construction Used Cat Excavator,
1.85 Ton Used Cat Excavator**

Product Description

Product Description:

One of the standout features of this excavator is its Original Hydraulic Pump Brand, which ensures smooth and efficient performance every time. Plus, with its Japan Original build, you can trust that this excavator is built to last and withstand even the toughest working conditions.

Whether you're working on a small residential project or a large-scale commercial construction site, this Crawler Excavator(NEW) is the ideal choice. With its powerful engine and advanced hydraulic system, you can expect exceptional digging and lifting capabilities, as well as precise control and maneuverability.

But don't just take our word for it – this Crawler Excavator(NEW) has been thoroughly inspected and tested by our team of experts to ensure that it meets our high standards of quality and performance. So why wait? Invest in the reliable and efficient Good Condition Japan Original 20 Ton Used Caterpillar Cat 320D Hydraulic Crawler Excavator today.

Features:

Product Name: Used Cat Excavator

Power: 110 KW

Video Outgoing-inspection: Provided

Machine Weight: 20000 KG

Working Hours: 860

Hydraulic Valve Brand: Original

Excavator Electrical Device

CAT Excavator Engine

Crawler Excavator(NEW)

Technical Parameters:

Product Name	Good Condition Japan Original 20 Ton Used Caterpillar Cat 320D Hydraulic Crawler Excavator
Operating Weight	21115 KG
Machine Weight	20000 KG
Power	110 KW
Year	2023
Engine Brand	Caterpillar
Machinery Test Report	Provided
Hydraulic Cylinder Brand	Original
Max Excavation Radius	2700 mm
Max Excavation Height	3860 mm

Applications:

With a max excavation radius of 2700 mm and max bucket loading weight of 1.85 ton, this excavator can handle a range of excavation and loading tasks. Its core components include a pressure vessel, motor, bearing, gear, pump, gearbox, engine, and PLC, ensuring efficient and reliable operation.

The used Cat excavator is ideal for a range of application occasions and scenarios, such as mining, road construction, demolition, and landscaping. Its hydraulic cylinder brand is original, ensuring quality and durability.

You can purchase this excavator for a competitive price of \$22,000.00 per unit for 1-3 units. Whether you need a heavy-duty excavator for a short-term project or long-term use, the used Cat excavator is a great choice.

So if you're in the market for a reliable and durable heavy-duty excavator with excellent performance, consider the used Cat excavator. Its excavator electrical device and other features make it an excellent choice for a variety of construction applications.

Support and Services:

Our Used Cat Excavator product comes with top-notch technical support and services to ensure your machine is always running smoothly. We offer:

24/7 remote technical support

In-person technical support from our expert technicians

Regular maintenance and service programs to maximize uptime and extend the life of your excavator

Genuine Cat parts and accessories for all repairs and replacements

Our team is dedicated to providing the best possible support for your Cat excavator, so you can focus on getting the job done.

Packing and Shipping:

The used Cat Excavator will be securely packaged and wrapped to ensure safe delivery. It will be placed on a pallet and covered with shrink wrap to prevent any damage during transit. The necessary documentation, such as the bill of lading and packing slip, will also be included in the package.

Shipping:

Our shipping services are reliable and efficient. We will arrange for the used Cat Excavator to be shipped to your desired location using a trusted carrier. The shipping cost will be calculated based on the distance and weight of the package, and will be added to the final invoice. We will provide you with a tracking number so you can track the package and know when to expect delivery.

FAQ:

Q: Where was the Cat Excavator manufactured?

A: The Cat Excavator was manufactured in Japan.

Q: What is the price of the Cat Excavator?

A: The price of the Cat Excavator is \$22,000.00 per unit for 1-3 units.

Q: What is the brand name of the excavator?

A: The brand name of the excavator is Cat.

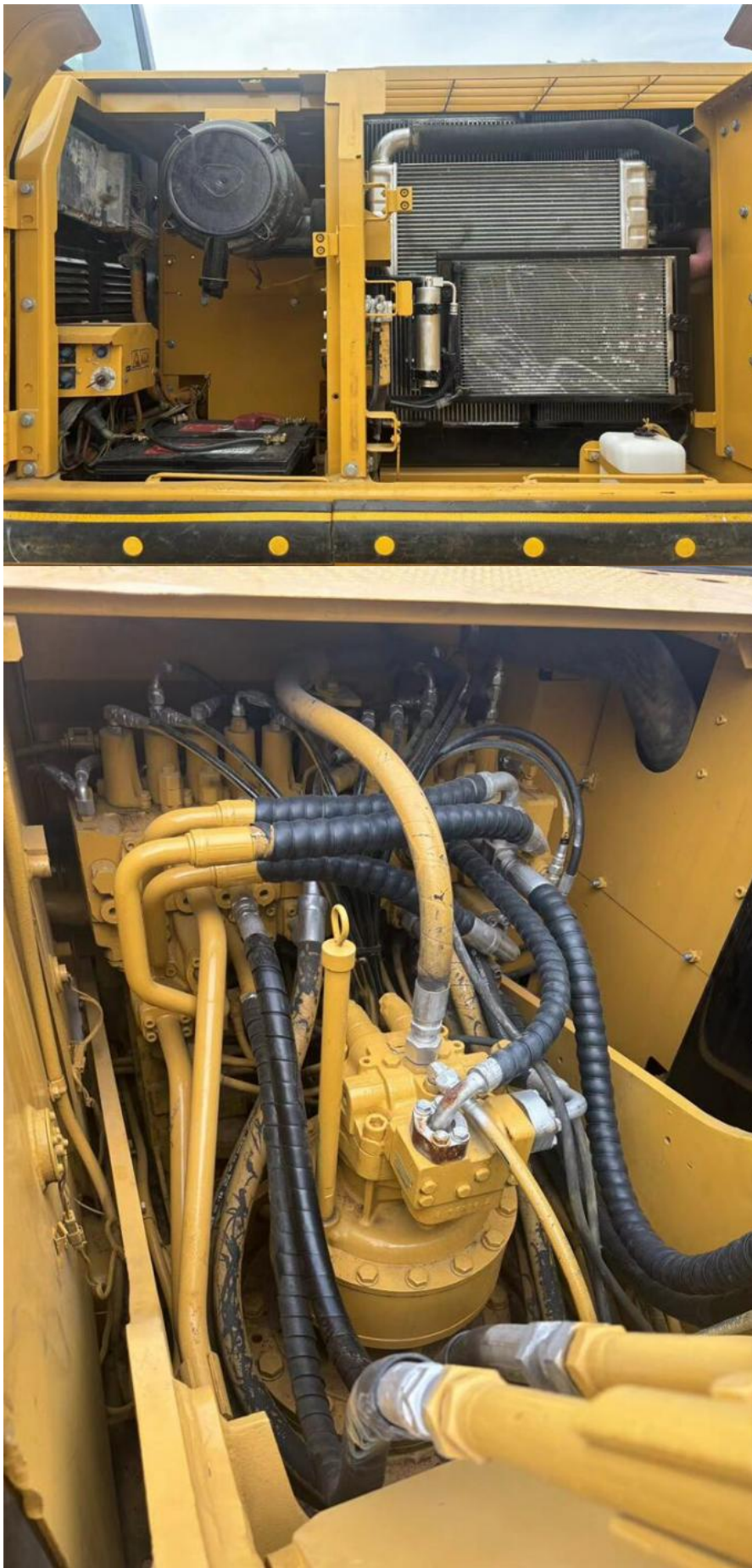
Q: What is the model number of the excavator?

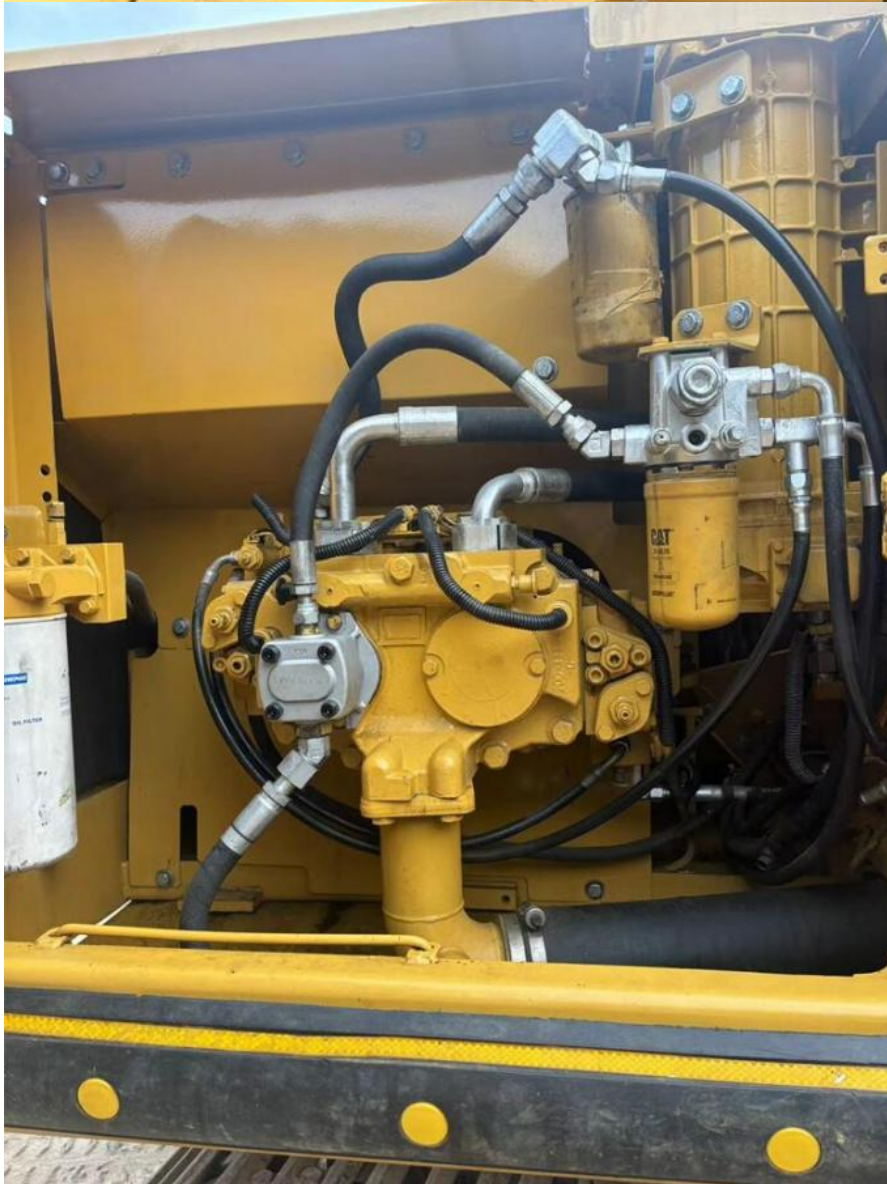
A: The model number of the excavator is 323D3.

Q: Is the Cat Excavator in good condition?

A: Yes, the Cat Excavator is in good condition and ready to be used.







Our office and team



Our stocks



Shanghai Kaishu Machinery Equipment Co., Ltd.



15821620827



18326615374@163.com



used-crawlerexcavator.com

No.3539 Jingdong Road, Shanghai, China