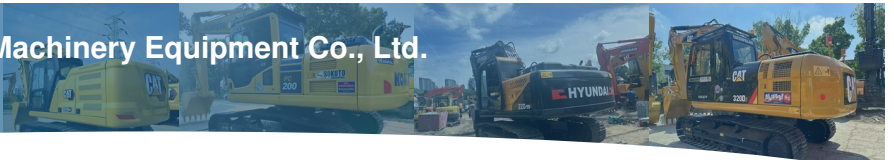




Shanghai Kaishu Machinery Equipment Co., Ltd.

[used-crawlerexcavator.com](http://used-crawlerexcavator.com)



## Robust CAT Excavator Engine With Original Hydraulic Valve And Operating Weight Of 21115 KG For Heavy Workloads

Our Product Introduction

more products please visit us on [used-crawlerexcavator.com](http://used-crawlerexcavator.com)

### Basic Information

- Place of Origin: Japan
- Brand Name: Cat
- Model Number: 323D3
- Price: \$22,000.00/units 1-3 units



### Product Specification

- Product Name: Good Condition Japan Original 20 Ton Used Caterpillar Cat 320D Hydraulic Crawler Excavator
- Working Hours: 860
- Video Outgoing-inspection: Provided
- Operating Weight: 21115 KG
- Year: 2023
- Max Digging Depth: 3740 Mm
- Max Excavation Height: 3860 Mm
- Core Components: Pressure Vessel, Motor, Bearing, Gear, Pump, Gearbox, Engine, PLC
- Highlight: **21115 KG CAT Excavator Engine ,  
Original Hydraulic Valve CAT Excavator Engine ,**

## Product Description

### Product Description:

This CAT excavator is equipped with a powerful CAT excavator engine, making it perfect for handling heavy-duty workloads. With a max bucket loading weight of 1.85 tons, you can easily move even the heaviest of materials. Plus, its operating weight of 21115 kg ensures stability and durability while you work.

This used CAT excavator was built in 2023, so it's still relatively new and has plenty of life left in it. Plus, it comes with an original hydraulic pump brand, ensuring reliable performance time and time again.

Whether you're working on a construction site, mining operation, or any other heavy-duty project, this CAT excavator is ready to get the job done. So why wait? Contact us today to learn more!

### Features:

Product Name: Good Condition Japan Original 20 Ton Used Caterpillar Cat 320D Hydraulic Crawler Excavator

Power: 110 KW

Max Bucket loading weight: 1.85 Ton

Video Outgoing-inspection: Provided

Engine Brand: Caterpillar

CAT Excavator Engine

Heavy Duty Excavator

Hydraulic Crawler Excavator

### Technical Parameters:

Crawler Excavator NEW	Used Cat Excavator
Heavy Duty Excavator	Yes
Machinery Test Report	Provided
Core Components	Pressure Vessel, Motor, Bearing, Gear, Pump, Gearbox, Engine, PLC
Power	110 KW
Hydraulic Pump Brand	Original
Bucket Capacity	1 M <sup>3</sup>
Hydraulic Cylinder Brand	Original
Year	2023
Max Excavation Radius	2700 mm
Working Hours	860
Operating Weight	21115 KG

### Applications:

The Cat 323D3 model was manufactured in 2023 and has a maximum digging depth of 3740 mm, making it the ideal excavator for deep excavation projects. With a power output of 110 KW and an original hydraulic pump brand, this excavator is designed to perform optimally, no matter the project requirements.

Whether you are working on commercial construction sites, landscaping projects, or mining operations, the Cat 323D3 Hydraulic Crawler Excavator is the perfect choice for you. It has a working hour of 860 hours and is a versatile machine that can be used for a wide range of applications.

If you are in the market for a crawler excavator that is both reliable and efficient, look no further than the Cat 323D3. This heavy-duty excavator is built to last and can withstand even the toughest working conditions.

Investing in a used Cat 323D3 Hydraulic Crawler Excavator is a wise decision that will provide you with the flexibility and power you need to complete your excavation projects on time and within budget. So why wait? Get your hands on this amazing machine today and experience the difference for yourself!

### Support and Services:

The Used Cat Excavator product technical support and services include:

Diagnostic testing to identify and troubleshoot any issues

Repairs and maintenance services to keep the excavator in top condition

Parts and component replacement for worn or damaged parts

Operator training to ensure safe and efficient operation

24/7 emergency support for urgent issues

Extended warranties and service agreements for added peace of mind

## Packing and Shipping:

The used Cat excavator will be packaged securely to ensure safe delivery. The packaging will include bubble wrap, foam, and a sturdy cardboard box. The excavator will be shipped via a reputable freight carrier. Delivery times and tracking information will be provided to the customer.

## FAQ:

**Q: Where is this Cat Excavator made?**

A: This Cat Excavator is made in Japan.

**Q: What is the price of this Cat Excavator?**

A: The price of this Cat Excavator is \$22,000.00 per unit for 1-3 units.

**Q: What is the brand name of this excavator?**

A: The brand name of this excavator is Cat.

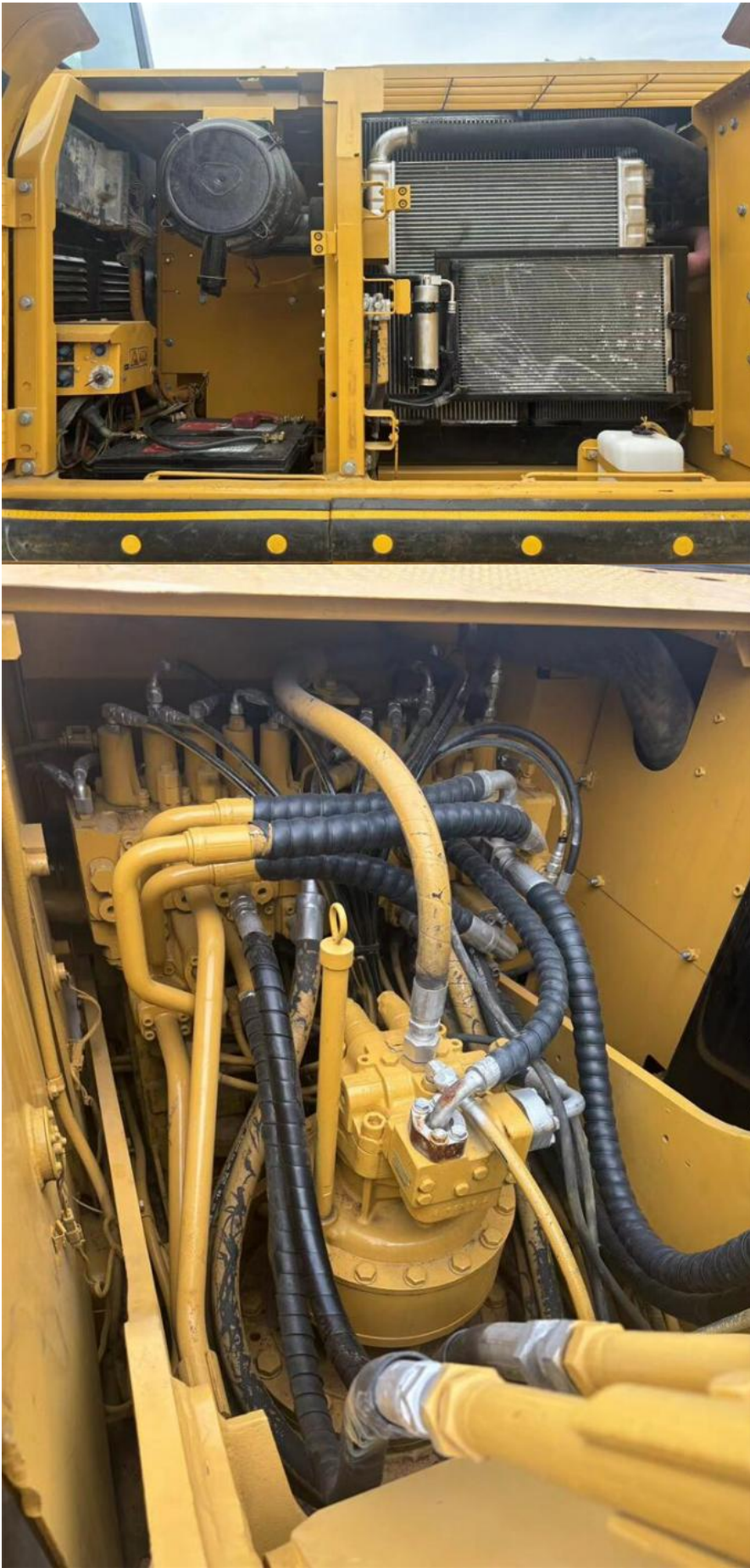
**Q: What is the model number of this Cat Excavator?**

A: The model number of this Cat Excavator is 323D3.

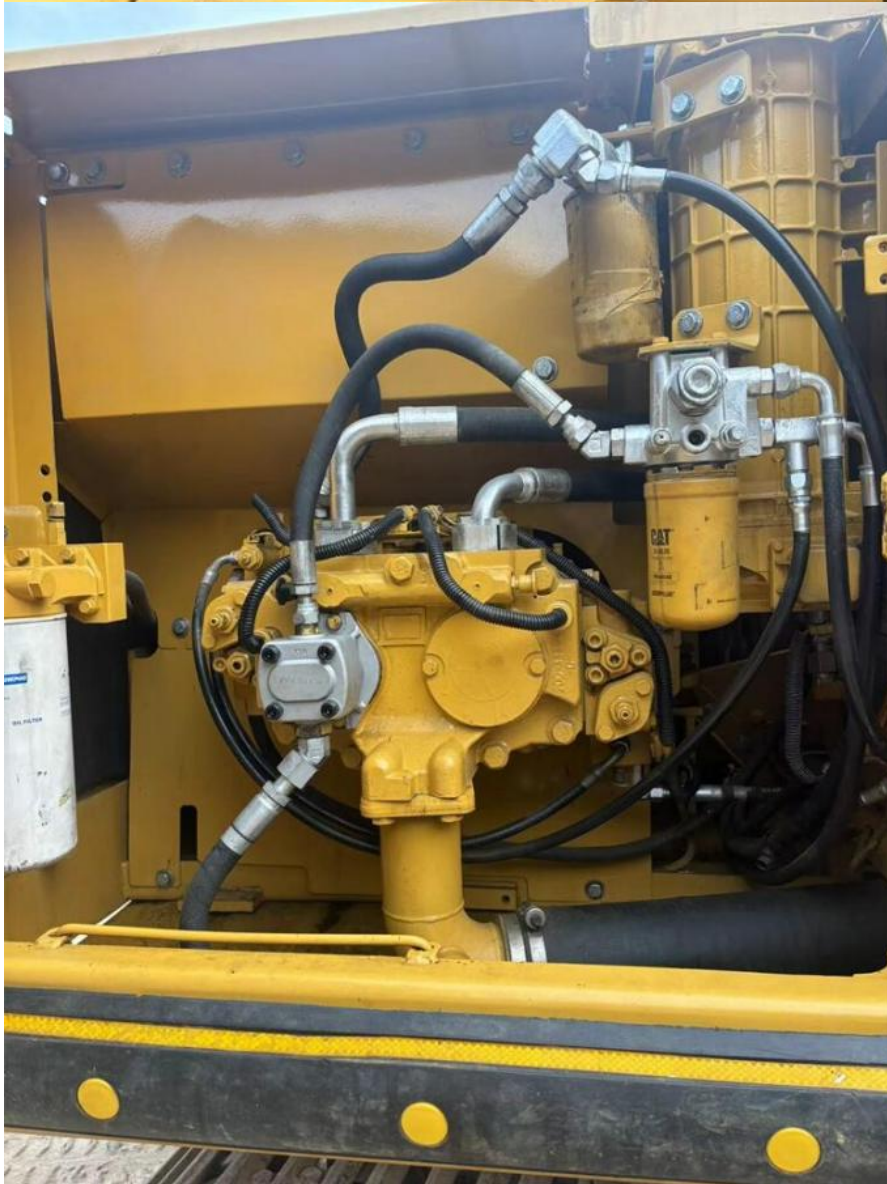
**Q: Is this a new or used excavator?**

A: This is a used Cat Excavator.









Our office and team



Our stocks



**Shanghai Kaishu Machinery Equipment Co., Ltd.**



15821620827



18326615374@163.com



used-crawlerexcavator.com

No.3539 Jingdong Road, Shanghai, China