



Used Hyundai R220LC-9S Excavator 22 Ton Korea Used Hyundai 220 Mining Digger

Our Product Introduction

for more products please visit us on used-crawlerexcavator.com

Basic Information

- Place of Origin: original
- Brand Name: hyundai
- Model Number: 220-9
- Minimum Order Quantity: 1
- Price: 26600\$
- Delivery Time: 15 work day
- Payment Terms: T/T
- Supply Ability: 50 units per month

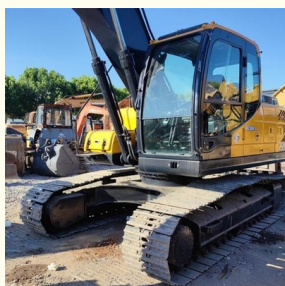


Product Specification

- Number Of Cylinders: 6
- Net Power: 107KW
- Machinery Test Report: Provided
- Engine: Cummins QSB6.7
- Engine Brand: Cummins
- Transport Height: 1.05m³
- Driving Method: Hydraulic
- Sysyem: Hydraulic
- Port: Shanghai
- Rated Power: 107/1950(Kw/rpm)
- Highlight: Korea Used Hyundai Excavator,
Used Hyundai R220LC-9S Excavator,
22 Ton Used Hyundai Excavator



More Images



Product Description

High Quality Used Hyundai R220LC-9S Excavator

Reasons to Choose a Hyundai Excavator?

Quality Reliability: Hyundai Construction Equipment is renowned for manufacturing high quality and reliable machinery. Hyundai excavators are built with rugged components and rigorously tested to ensure durability and long-term performance. This reliability reduces downtime and increases productivity on the job site.

Innovative Technology: Hyundai excavators often feature advanced technology features such as intelligent control systems, telematics, and integrated monitoring systems. These technologies improve operational efficiency, provide real-time machine data, and enable proactive maintenance schedules, which increase productivity and reduce operating costs.

Fuel Efficiency: Hyundai has made significant advances in fuel-saving technology for excavators. Hyundai excavators offer excellent fuel efficiency by optimizing engine performance, hydraulic systems, and overall machine design. This not only reduces operating costs, but also contributes to environmental sustainability by minimizing fuel consumption and emissions.

What are the dimensions of the Hyundai R220LC-9S excavator?

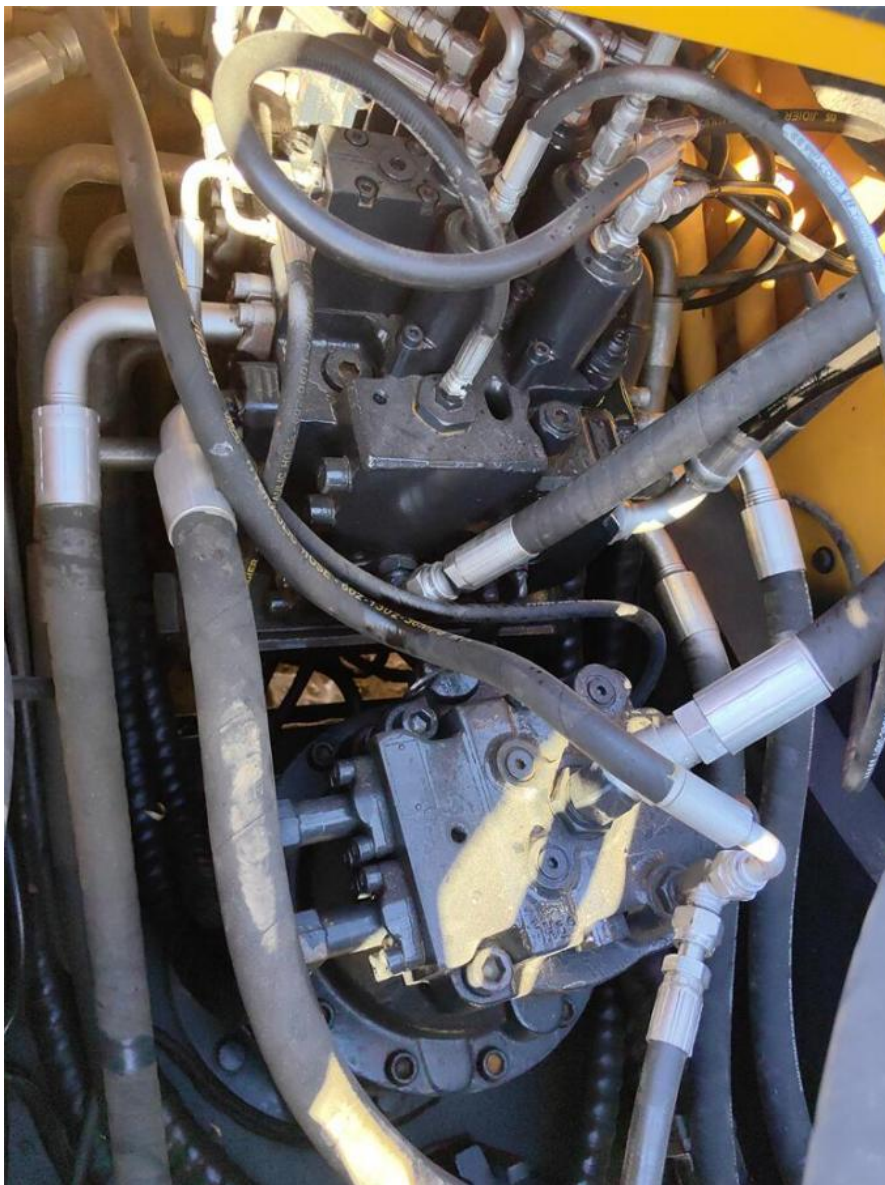
The Hyundai R220LC-9S excavator weighs 22 tons. The dimensions of the second-hand Hyundai 220lc-9s excavator are 9.55m*2.99m*3.08m.

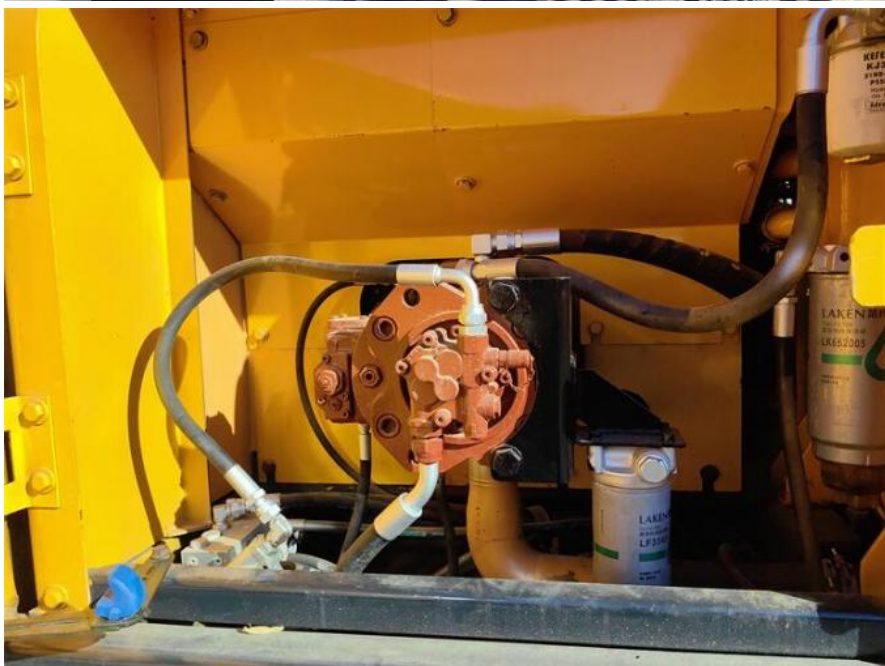
Related products: Doosan DX225, Komatsu PC220-8, Hyundai R210W, CAT 320D, Hitachi ZX200

PRODUCT INFORMATION

	DATA
Type	HYUNDAI 220
Place of original	KOREAN
A given year	2023
Working hours	530
Machine weight	22ton
Dipper capacity	1.05m³
Engine	QSB6.7
Engine brand	Cummins
Rated power	107KW
Bucket digging force	152kN
Bucket rod digging force	106.8kN
Transport length	9550mm
Transport width	2990mm
Transport height	3080mm
Max excavation radius	9980mm
Max digging depth	6730mm
Max excavation height	9600mm
Max uploading height	6780mm
Max vertical digging depth	6280mm

Detail Photos





Company Profile

Shanghai Kaishu Machinery Equipment Co., Ltd was established in 2017, we have our own factory which covers an area of 67,000 square meters, with 200 employees. As a leading used excavator supplier in China, Shanghai Kaishu Machinery Equipment Co., Ltd has numerous construction machinery. Our teams are composed of a purchasing team, a technical support team, a vehicle-parts supply center, a foreign trade sales team and a quality testing center. Our full range of products include: used excavators, used loaders, used graders, used bulldozers, used forklifts, used cranes and other used construction machinery products. Our engineering machines are mainly from China, the United States, Japan,

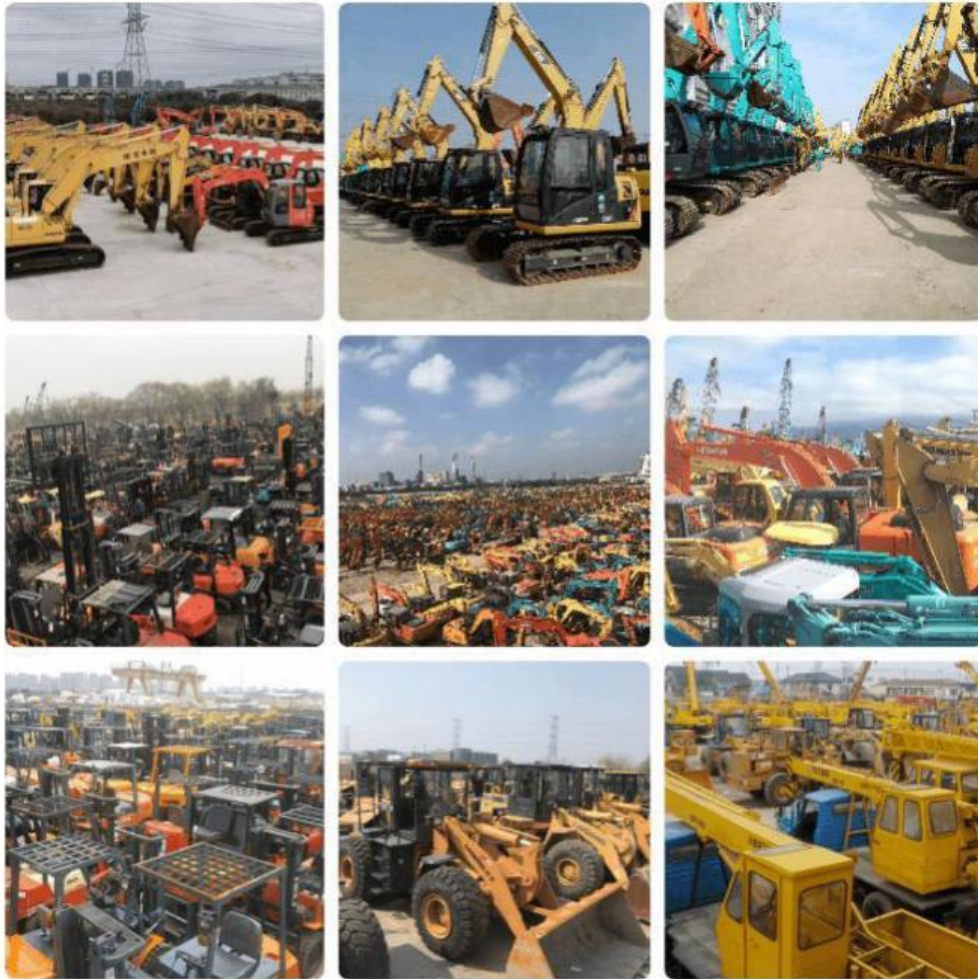
South Korea and other manufacturing countries, quality assurance is our hallmark. Our machines are sold to many regions at home and abroad, and we have rich export experience.

In order to serve our customers better, we deal in three(3) thousand units of construction machinery all year round and ensure delivery within 7-30 days after payment. Our team can serve you around the clock (24/7) and we hope to build a long-term business relationship with you.

Our office and team



Our stocks



Our transaction case



FAQ

1. What's your payment terms and trade terms?

Generally 50% deposit and 50% balance before shipping. Of course, we can negotiate according to your orders. We can accept EXW, FOB, CRF and CIF.

2. How to ship the excavators?

- (1). Container: which is cheapest and fast. but sometime machine need to be dismantled .
- (2). Bulk cargo ship :which is better for bigger construction equipment ,ship as it is.
- (3). Flat rack ship :which is better for bigger machine and also no need to dismantle
- (4). RO RO ship : which is good for every machine and faster

3. Is it convenient to visit you?

You are welcome to visit us. So you can see how many used excavators we have in stock and the condition of them. We can pick you up at Shanghai Air port.



Shanghai Kaishu Machinery Equipment Co., Ltd.



15821620827



gavin_kaishu@163.com



used-crawlerexcavator.com

