



Original newest model used Caterpillar Cat 320GC excavator 20 ton in Shanghai

Our Product Introduction

for more products please visit us on used-crawlerexcavator.com

Basic Information

- Place of Origin: Japan
- Brand Name: Cat
- Model Number: 320GC
- Price: \$56,000.00/units 1-3 units



Product Specification

- Showroom Location: None
- Operating Weight: 20300 KG
- Bucket Capacity: 1.0 M³
- Machine Weight: 20000 KG
- Hydraulic Cylinder Brand: Original
- Hydraulic Pump Brand: Original
- Hydraulic Valve Brand: Original
- Engine Brand: Caterpillar
- Power: 110 KW
- Machinery Test Report: Provided
- Video Outgoing-inspection: Provided
- Core Components: Bearing, Gear, Pump, Engine
- Year: 2021
- Working Hours: 1803
- Highlight: 20 Ton Used Excavator.



More Images



Product Description

Features of Original newest model used Caterpillar Cat 320GC excavator 20 ton in Shanghai

1. This used cat 320GC excavator is in very good condition. And all main parts are original.
2. The Cat engine has high reliability, strong power, and fuel efficiency.
3. Versatile in use, it can be used for construction or mining. Caterpillar excavators are the best choice for mining.
4. The Cat 320GC has reliable and robust performance, long lifespan, low failure rate, and strong performance.

Technical dates of Original newest model used Caterpillar Cat 320GC excavator 20 ton in Shanghai

ITEM	DATA
Model	Original newest model used Caterpillar Cat 320GC excavator 20 ton in Shanghai
HS code	8429521200
Place of original	Japan
Manufactured year	2022
Working hours	860
Operating Weight	20830 KG
Bucket size	1 m ³
Max Bucket loading weight	2.55 Ton
Engine	Caterpillar C6.4
Rated power	105 KW
Travel speed	3.5-5.2 km/h
Transport length	9470 mm
Transport width	2850 mm
Transport height	3060 mm
Max excavation radius	9590 mm
Max digging depth	6720 mm
Max excavation height	9850 mm
Max uploading height	6510 mm
Max vertical digging depth	6190 mm

Shipping methods of Original newest model used Caterpillar Cat 320GC excavator 20 ton in Shanghai

1. Bulk cargo vessel.
The used cat 320d excavator will be put on the deck of bulk cargo vessel directly. This shipping way is cheaper, but needs longer time.
2. Flat rack.
The used cat 320d excavator will be put in a flat rack, then load on container vessel. This shipping way is expensive, but needs short time.
3. Container.
The used cat 320d excavator can be dismantled and put in a 40HQ. But the buyer needs to assemble after getting the container.
4. Ro-ro vessel.
This transportation method used to be frequently used, but due to the surge in China's new energy vehicle exports, most roll on/roll off ships have been leased by new energy vehicle manufacturers.

Detail pictures of Original newest model used Caterpillar Cat 320GC excavator 20 ton in Shanghai



About us

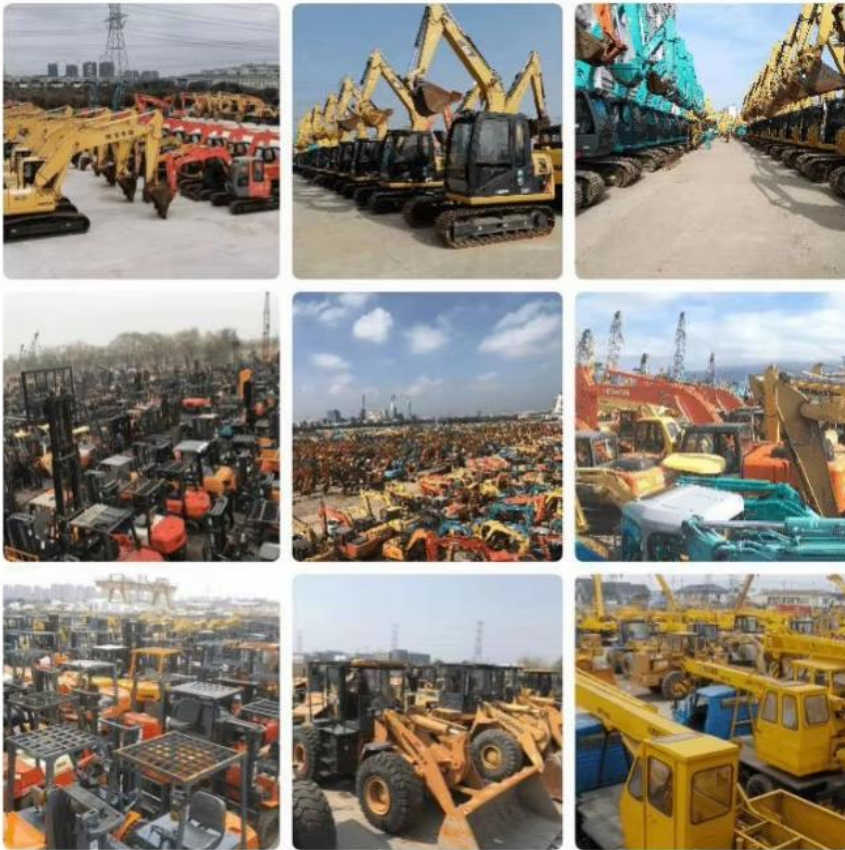
Shanghai Kaishu Machinery Equipment Co., Ltd was established in 2017, we have our own factory which covers an area of 67,000 square meters, with 200 employees. As a leading used excavator supplier in China, Shanghai Kaishu Machinery Equipment Co., Ltd has numerous construction machinery. Our teams are composed of a purchasing team, a technical support team, a vehicle-parts supply center, a foreign trade sales team and a quality testing center.

Our full range of products include: used excavators, used loaders, used graders, used bulldozers, used forklifts, used cranes and other used construction machinery products. Our engineering machines are mainly from China, the United States, Japan, South Korea and other manufacturing countries, quality assurance is our hallmark. Our machines are sold to many regions at

home and abroad, and we have rich export experience.

In order to serve our customers better, we deal in three thousand units of construction machinery all year round and ensure delivery within 7-30 days after payment. Our team can serve you around the clock (24/7) and we hope to build a long-term business relationship with you.

Our stocks



Shanghai Kaishu Machinery Equipment Co., Ltd.



15821620827



gavin_kaishu@163.com



used-crawlerexcavator.com

No.3539 Jingdong Road, Shanghai, China