



7 Ton Rated Load Backhoe CAT 420F Excavators Good Condition 7000-8000 kg Machine Weight

Our Product Introduction

for more products please visit us on used-crawlerexcavator.com

Basic Information

- Price: \$30,000.00/units 1-3 units



Product Specification

- Applicable Industries: Building Material Shops, Manufacturing Plant, Construction Works
- Showroom Location: None
- Type: Backhoe Loader
- Rated Load: 7 Ton
- Machine Weight: 7000 - 8000 Kg
- Hydraulic Pump Brand: Original
- Engine Brand: Caterpillar
- Power: 75 KW
- Machinery Test Report: Provided
- Video Outgoing-inspection: Provided
- Core Components: Pressure Vessel, Motor, Bearing, Gear, Pump, Gearbox, Engine
- Year: 2022
- Working Hours: 0-2000



More Images



Product Description

Product Description



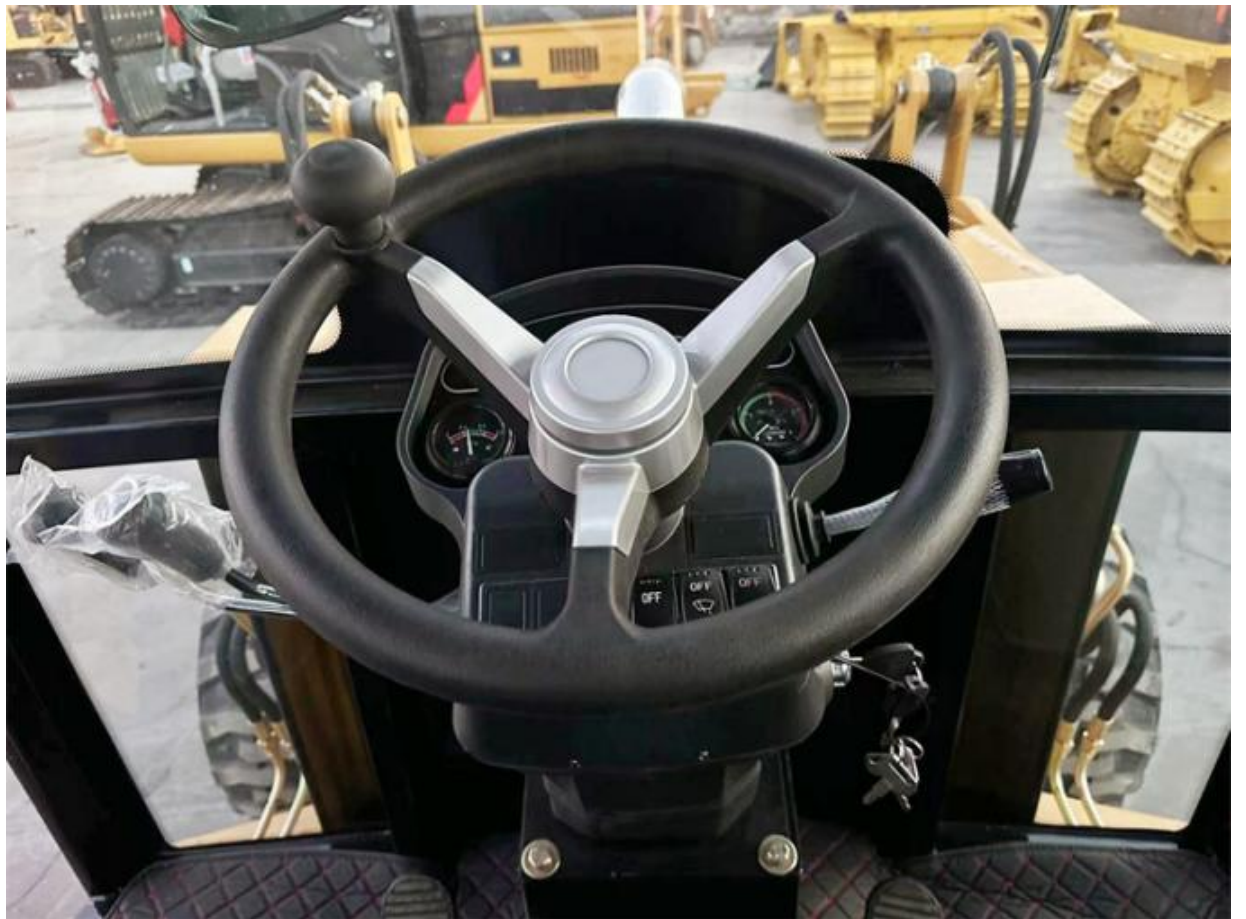
Our Product Introduction

for more products please visit us on used-crawlerexcavator.com











Specification

item	value
Applicable Industries	Building Material Shops, Manufacturing Plant, Construction works
Showroom Location	None
Type	Backhoe Loader
Rated Load	7 ton
Machine Weight	7000kg - 8000kg
Hydraulic Pump Brand	Original
Power	75 KW
Machinery Test Report	Provided
Video outgoing-inspection	Provided
Core Components	Pressure vessel, Motor, Bearing, Gear, Pump, Gearbox, Engine
Year	2022
Working hours	0-2000

Company Profile

Shanghai Kaishu Machinery Equipment Co., Ltd was established in 2017, we have our own factory which covers an area of 67,000 square meters, with 200 employees. As a leading used excavator supplier in China, Shanghai Kaishu Machinery Equipment Co., Ltd has numerous construction machinery. Our teams are composed of a purchasing team, a technical support team, a vehicle-parts supply center, a foreign trade sales team and a quality testing center. Our full range of products include: used excavators, used loaders, used graders, used bulldozers, used forklifts, used cranes and other used construction machinery products. Our engineering machines are mainly from China, the United States, Japan, South Korea and other manufacturing countries, quality assurance is our hallmark. Our machines are sold to many regions at home and abroad, and we have rich export experience. In order to serve our customers better, we deal in three thousand units of construction machinery all year round and ensure delivery within 7-30 days after payment. Our team can serve you around the clock (24/7) and we hope to build a long-term business relationship with you.

Our office and team



Our stocks



FAQ

1. What's your payment terms and trade terms?

Generally 50% deposit and 50% balance before shipping. Of course, we can negotiate according to your orders. We can accept EXW, FOB, CRF and CIF.

2. How to ship the excavators?

- (1). Container: which is cheapest and fast. but sometime machine need to be dismantled .
- (2). Bulk cargo ship :which is better for bigger construction equipment ,ship as it is.
- (3). Flat rack ship :which is better for bigger machine and also no need to dismantle
- (4). RO RO ship : which is good for every machine and faster

3. Is it convenient to visit you?

You are welcome to visit us. So you can see how many used excavators we have in stock and the condition of them. We can pick you up at Shanghai Air port.



Shanghai Kaishu Machinery Equipment Co., Ltd.



15821620827



gavin_kaishu@163.com



used-crawlerexcavator.com

No.3539 Jingdong Road, Shanghai, China