



## Original Caterpillar 336 Excavator 36 Ton Used with Original Hydraulic Valve from Japan

Our Product Introduction

for more products please visit us on [used-crawlerexcavator.com](http://used-crawlerexcavator.com)

### Basic Information

- Place of Origin: Japan
- Brand Name: caterpillar
- Minimum Order Quantity: 1set
- Price: \$51,000.00/units 1-3 units
- Delivery Time: 15 work day
- Payment Terms: T/T
- Supply Ability: 10



### Product Specification

- Showroom Location: None
- Operating Weight: 35020 KG
- Bucket Capacity: 1.8 M³
- Machine Weight: 36000 KG
- Hydraulic Cylinder Brand: Original
- Hydraulic Pump Brand: Original
- Hydraulic Valve Brand: Original
- Engine Brand: Caterpillar
- Power: 200 KW
- Machinery Test Report: Provided
- Video Outgoing-inspection: Provided
- Core Components: Pressure Vessel, Motor, Bearing, Gear, Pump, Gearbox, Engine, PLC
- Year: 2020
- Working Hours: 2866



### More Images



## Product Description

### Features of Original Caterpillar 336 Excavator 36 Ton Used with Original Hydraulic Valve from Japan

#### 1. Powerful Power:

CAT excavators are equipped with high-performance engines that provide powerful driving force and excellent excavation and soil pushing capabilities.

#### 2. Good fuel economy:

CAT excavators adopt intelligent fuel management systems, which can dynamically optimize fuel supply according to power demand, reduce fuel consumption, improve fuel economy, and reduce operating costs.

#### 3. Easy to operate:

CAT excavators adopt intelligent operating systems, providing intuitive and easy to understand operating interfaces and human-computer interaction functions, allowing operators to easily master various operating skills and improve work efficiency.

#### 4. Performance upgrade:

CAT excavators have also been upgraded in terms of overall performance, such as adopting advanced hydraulic systems, electronic control systems, etc., providing strong excavation force and climbing ability, and can quickly complete various excavation tasks.

#### 5. Humanized design:

CAT excavators also have outstanding highlights in terms of operability, such as spacious and comfortable cab design, centralized control console, suspended seats, intelligent LCD display screen and other humanized operation designs, which enable drivers to easily drive and control the machine, improving work safety.

#### 6. Maintenance convenience:

CAT excavators have also improved in terms of maintenance convenience, such as adopting three-level fuel filtration, automatic detection of engine post-processing system faults, intelligent upgrade systems, etc., which facilitate maintenance and upkeep, and reduce maintenance costs.

### Dates of Original Caterpillar 336 Excavator 36 Ton Used with Original Hydraulic Valve from Japan

ITEM	DATA
Model	Original Caterpillar 336 Excavator 36 Ton Used with Original Hydraulic Valve from Japan
HS code	8429521200
Place of original	JAPAN
Max Bucket loading weight	36Ton
Engine	Cat C9ACERT
Travel speed	5 km/h
Transport length	11150 mm
Transport width	3190 mm
Transport height	3340mm
Max excavation radius	10920mm
Max digging depth	7390mm
Max excavation height	10240mm
Max uploading height	7200mm
Max vertical digging depth	5830mm

### Shipping methods of Original Caterpillar 336 Excavator 36 Ton Used with Original Hydraulic Valve from Japan

#### 1. Bulk cargo vessel.

The used cat excavator will be put on the deck of bulk cargo vessel directly. This shipping way is cheaper, but needs longer time.

#### 2. Flat rack.

The used cat excavator will be put in a flat rack, then load on container vessel. This shipping way is expensive, but needs short time.

#### 3. Container.

It's the cheapest shipping way. But for big machine, it will be dismantled into many parts to put into the fill in the container. And the buyer needs to assemble after getting the container.

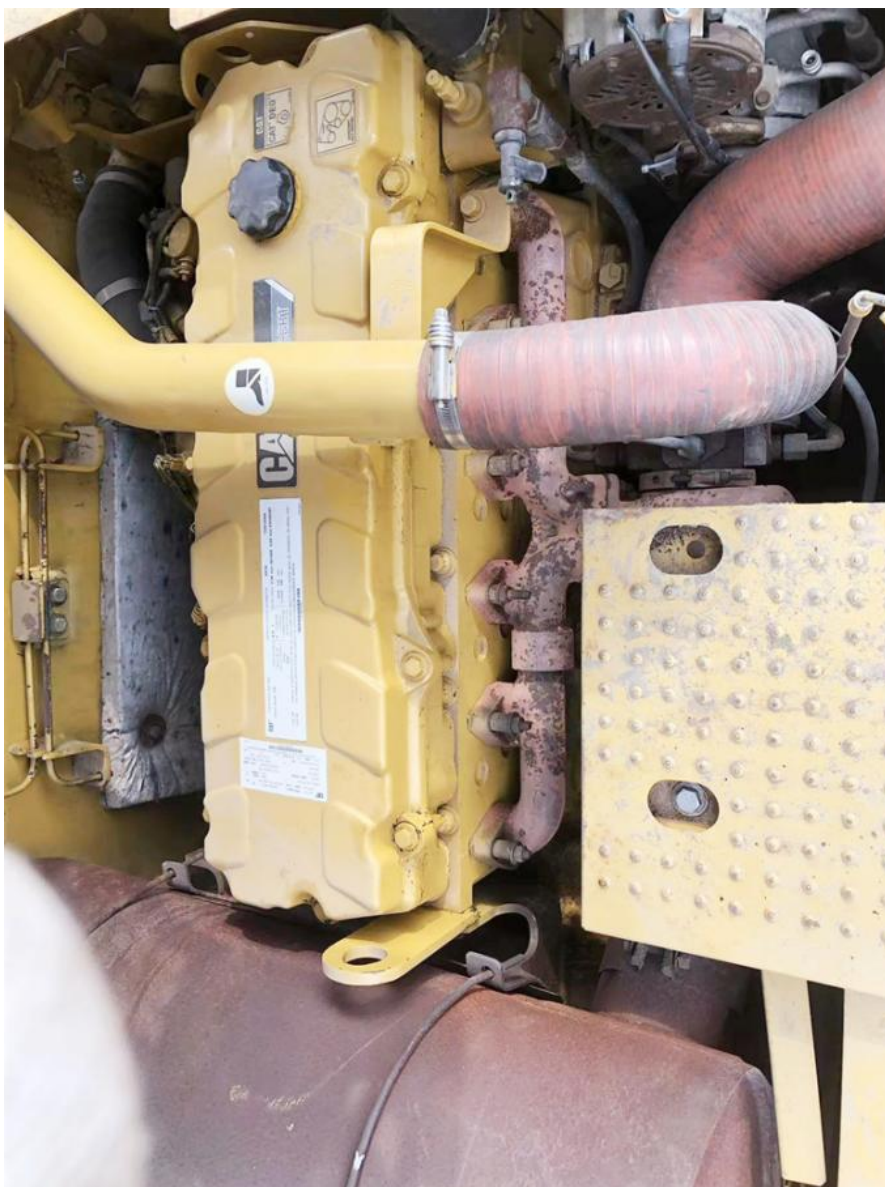
#### 4. Ro-ro vessel.

This transportation method used to be frequently used, but due to the surge in China's new energy vehicle exports, most roll on/roll off ships have been leased by new energy vehicle manufacturers.

### Product pictures of Original Caterpillar 336 Excavator 36 Ton Used with Original Hydraulic Valve from Japan







**More models we can supply**

Komatsu used excavator	PC20/PC30/PC35/PC40/PC50/PC55/PC56/PC60/PC70/PC75/PC78/PC100/PC1
	10/PC120/PC128/PC130/PC138/PC150/PC160/PC200/PC210/PC220/PC228/PC240/PC270/PC300/PC350/PC360/PC400/PC450/PC460/PC490/PC650

Carter used excavator	CAT303/CAT305/CAT305.5/CAT306/CAT307/CAT308/CAT311/CAT312/CAT313/CAT315/CAT318/CAT320/CAT323/CAT324/CAT325/CAT326/CAT329/CAT330/CAT336/CAT340/CAT345/CAT349/CAT375
Doosan used excavator	DH(DX)35/55/60/70/75/80/150/200/215/220/225/235/260/300/350/370/420/500/530
Sany used excavator	SY16/SY35/SY55/SY60/SY65/SY75/SY85/SY95/SY115/SY135/SY155/SY205/SY215/SY235/SY265/SY305/SY335/SY365
Hitachi used excavator	EX50/EX55/EX60/EX100/EX120/EX200/ZX50/ZX55/ZX60/ZX70/ZX75/ZX120/ZX125/ZX130/ZX135/ZX200/ZX210/ZX230/ZX240/ZX250/ZX270/ZX300/ZX330/ZX350/ZX360/ZX450/ZX600
Kobelco used excavator	SK50/SK55/SK60/SK70/SK75/SK115/SK135/SK140/SK160/SK200/SK210/SK230/SK235/SK250/SK260/SK330/SK350/SK450/SK460
Hyundai used excavator	R55/R60/R70/R75/R80/R110/R115/R130/R150/R200/R205/R210/R220/R225/R245/R305/R375/R420
Kubota used excavator	10/15/16/17/18/20/25/30/35/40/50/155/161/163/165/185
Volvo used excavator	EC55/EC60/EC80/EC140/EC200/EC210/EC240/EC290/EC300/EC360/EC380/EC460/EC480
Excavators of other brands	QAY,CLG,Keith,Takeuchi,Sumitomo,Yanmar,IHI,SUNWARD,Yuchai,Zoomlion

### Company Profile

**Shanghai Kaishu Machinery Equipment Co., Ltd** was established in 2017, we have our own factory which covers an area of 67,000 square meters, with 200 employees. As a leading used excavator supplier in China, Shanghai Kaishu Machinery Equipment Co., Ltd has numerous construction machinery. Our teams are composed of a purchasing team, a technical support team, a vehicle-parts supply center, a foreign trade sales team and a quality testing center.

Our full range of products include: used excavators, used loaders, used graders, used bulldozers, used forklifts, used cranes and other used construction machinery products. Our engineering machines are mainly from China, the United States, Japan, South Korea and other manufacturing countries, quality assurance is our hallmark. Our machines are sold to many regions at home and abroad, and we have rich export experience.

In order to serve our customers better, we deal in three(3) thousand units of construction machinery all year round and ensure delivery within 7-30 days after payment. Our team can serve you around the clock (24/7) and we hope to build a long-term business relationship with you.





Our transaction case





**Accessories we can supply**



QUALITY FIRST, SERVICE FOREMOST

<https://www.used-crawlerexcavator.com>  
<https://shanghaikaishu.en.alibaba.com>

## FAQ

### 1. What's your payment terms and trade terms?

Generally 50% deposit and 50% balance before shipping. Of course, we can negotiate according to your orders. We can accept EXW, FOB, CRF and CIF.

### 2. How to ship the excavators?

- (1). Container: which is cheapest and fast. but sometime machine need to be dismantled .
- (2). Bulk cargo ship :which is better for bigger construction equipment ,ship as it is.
- (3). Flat rack ship :which is better for bigger machine and also no need to dismantle
- (4). RO RO ship : which is good for every machine and faster

### 3. Is it convenient to visit you?

You are welcome to visit us. So you can see how many used excavators we have in stock and the condition of them. We can pick you up at Shanghai Air port.



**Shanghai Kaishu Machinery Equipment Co., Ltd.**



15821620827



[gavin\\_kaishu@163.com](mailto:gavin_kaishu@163.com)



[used-crawlerexcavator.com](https://www.used-crawlerexcavator.com)

No.3539 Jingdong Road, Shanghai, China