



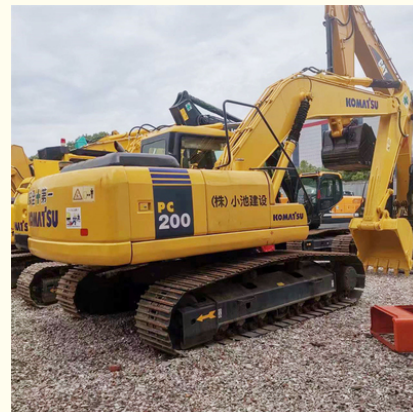
Japan Original Used Komatsu PC200-7 Excavator 20 Ton In Shanghai

Our Product Introduction

for more products please visit us on used-crawlerexcavator.com

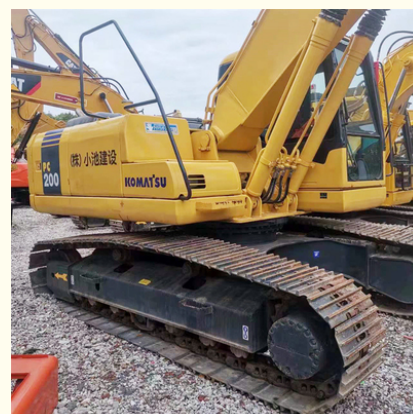
Basic Information

- Place of Origin: Japan
- Brand Name: Komatsu
- Model Number: PC200-7
- Price: \$26,000.00/units 1-3 units
- Packaging Details:
 1. Bulk cargo.
 2. Flat rack.
 3. Container.
- Supply Ability: 100 Unit/Units per Month

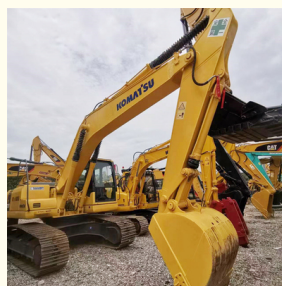


Product Specification

- Showroom Location: None
- Operating Weight: 19900 KG
- Bucket Capacity: 0.8m³
- Machine Weight: 20000 KG
- Hydraulic Cylinder Brand: Original
- Hydraulic Pump Brand: Original
- Hydraulic Valve Brand: Original
- Engine Brand: Original
- Power: 103 KW
- Machinery Test Report: Provided
- Video Outgoing-inspection: Provided
- Core Components: Pressure Vessel, Motor, Bearing, Gear, Pump, Gearbox, Engine, PLC
- Year: 2020
- Working Hours: 1000-2000



More Images



Product Description

Features of Japan original used Komatsu PC200-7 excavator 20 ton in Shanghai

1. Good compatibility:

The various components of Komatsu excavator work together seamlessly, enabling efficient and stable completion of various tasks

2. Flexible hydraulic system:

The hydraulic system design of Komatsu excavator is advanced and can provide abundant power, enabling the machine to perform well in various working environments.

3. Strong durability:

The engine and large pump of Komatsu excavator are very durable, with low maintenance rate, long maintenance intervals, and can operate stably for a long time.

4. Low fuel consumption:

Compared to other brands, Komatsu excavators have lower fuel consumption, which can effectively save costs.

5. Strong stability:

Whether it is a large or small excavator, Komatsu's products exhibit extremely high stability and can work reliably in various environments.

Dates of Japan original used Komatsu PC200-7 excavator 20 ton in Shanghai

ITEM	DATA
Model	Japan original used Komatsu PC200-7 excavator 20 ton in Shanghai
HS code	8429521200
Place of original	Japan
Max Bucket loading weight	2.0 Ton
Engine	Cummins 6D102E-2
Travel speed	3.3-5.4 km/h
Transport length	9480 mm
Transport width	3000 mm
Transport height	2985 mm
Max excavation radius	9380 mm
Max digging depth	5380 mm
Max excavation height	9800 mm
Max unloading height	6890 mm
Max vertical digging depth	5380 mm

Shipping methods of Japan original used Komatsu PC200-7 excavator 20 ton in Shanghai

1. Bulk cargo vessel.

The used cat excavator will be put on the deck of bulk cargo vessel directly. This shipping way is cheaper, but needs longer time.

2. Flat rack.

The used cat excavator will be put in a flat rack, then load on container vessel. This shipping way is expensive, but needs short time.

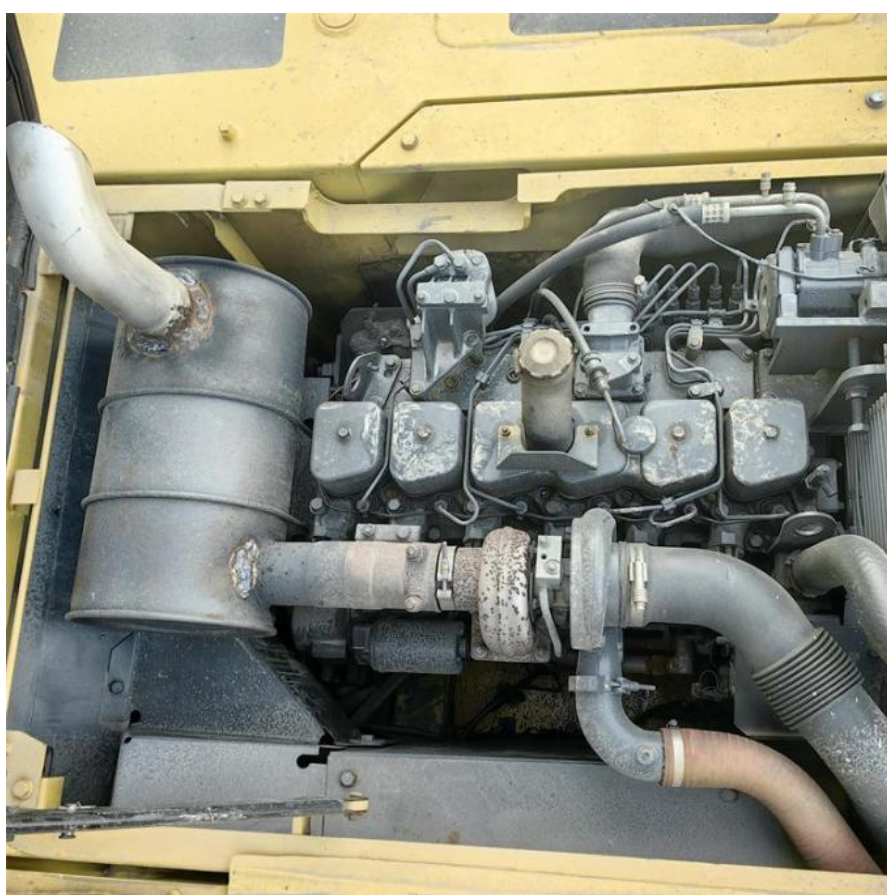
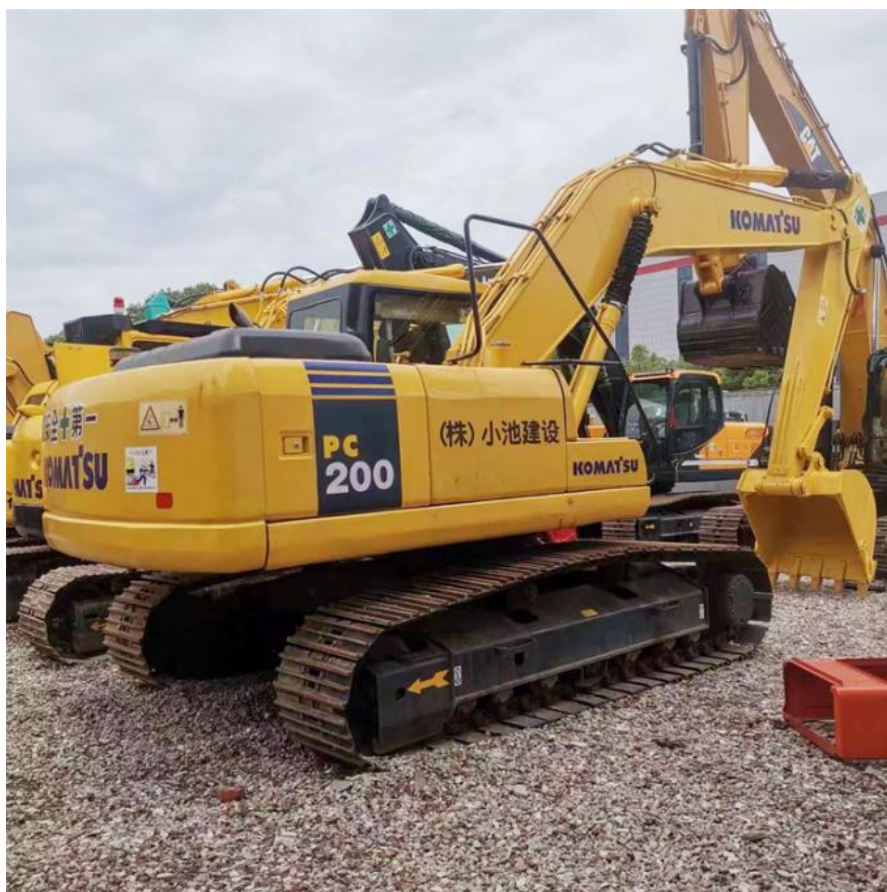
3. Container.

It's the cheapest shipping way. But for big machine, it will be dismantled into many parts to put into the fill in the container. And the buyer needs to assemble after getting the container.

4. Ro-ro vessel.

This transportation method used to be frequently used, but due to the surge in China's new energy vehicle exports, most roll on/roll off ships have been leased by new energy vehicle manufacturers.

Product pictures of Japan original used Komatsu PC200-7 excavator 20 ton in Shanghai





More models we can supply

Komatsu used excavator	PC20/PC30/PC35/PC40/PC50/PC55/PC56/PC60/PC70/PC75/PC78/PC100/PC110/PC120/PC128/PC130/PC138/PC150/PC160/PC200/PC210/PC220/PC228/PC240/PC270/PC300/PC350/PC360/PC400/PC450/PC460/PC490/PC650
Caterpillar used excavator	CAT303/CAT305/CAT305.5/CAT306/CAT307/CAT308/CAT311/CAT312/CAT313/CAT315/CAT318/CAT320/CAT323/CAT324/CAT325/CAT326/CAT329/CAT330/CAT336/CAT340/CAT345/CAT349/CAT375
Doosan used excavator	DH(DX)35/55/60/70/75/80/150/200/215/220/225/235/260/300/350/530
Sany used excavator	SY16/SY35/SY55/SY60/SY65/SY75/SY85/SY95/SY115/SY135/SY155/SY205/SY215/SY235/SY265/SY305/SY335/SY365
Hitachi used excavator	EX50/EX55/EX60/EX100/EX120/EX200/ZX50/ZX55/ZX60/ZX70/ZX75/ZX120/ZX125/ZX130/ZX135/ZX200/ZX210/ZX230/ZX240/ZX250/ZX270/ZX300/ZX330/ZX350/ZX360/ZX450/ZX600
Kobelco used excavator	SK50/SK55/SK60/SK70/SK75/SK115/SK135/SK140/SK160/SK200/SK210/SK230/SK235/SK250/SK260/SK330/SK350/SK450/SK460
Hyundai used excavator	R55/R60/R70/R75/R80/R110/R115/R130/R150/R200/R205/R210/R220/R225/R245/R305/R375/R420
Kubota used excavator	10/15/16/17/18/20/25/30/35/40/50/155/161/163/165/185
Volvo used excavator	EC55/EC60/EC80/EC140/EC200/EC210/EC240/EC290/EC300/EC360/EC380/EC460/EC480
Excavators of other brands	QAY, CLG, Keith, Takeuchi, Sumitomo, Yanmar, IHI, SUNWARD, Yuchai, Zoomlion

Company Profile

Shanghai Kaishu Machinery Equipment Co., Ltd was established in 2017, we have our own factory which covers an area of 67,000 square meters, with 200 employees. As a leading used excavator supplier in China, Shanghai Kaishu Machinery Equipment Co., Ltd has numerous construction machinery. Our teams are composed of a purchasing team, a technical support team, a vehicle-parts supply center, a foreign trade sales team and a quality testing center.

Our full range of products include: used excavators, used loaders, used graders, used bulldozers, used forklifts, used cranes and other used construction machinery products. Our engineering machines are mainly from China, the United States, Japan, South Korea and other manufacturing countries, quality assurance is our hallmark. Our machines are sold to many regions at home and abroad, and we have rich export experience.

In order to serve our customers better, we deal in three(3) thousand units of construction machinery all year round and ensure delivery within 7-30 days after payment. Our team can serve you around the clock (24/7) and we hope to build a long-term business relationship with you.

Our office and team



Our stocks



Our transaction case



Aceccesorries we can supply



QUALITY FIRST, SERVICE FOREMOST

<https://www.used-crawlerexcavator.com>
<https://shanghaikaishu.en.alibaba.com>

FAQ

1. What's your payment terms and trade terms?

Generally 50% deposit and 50% balance before shipping. Of course, we can negotiate according to your orders. We can accept EXW, FOB, CRF and CIF.

2. How to ship the excavators?

- (1). Container: which is cheapest and fast. but sometime machine need to be dismantled .
- (2). Bulk cargo ship :which is better for bigger construction equipment ,ship as it is.
- (3). Flat rack ship :which is better for bigger machine and also no need to dismantle
- (4). RO RO ship : which is good for every machine and faster

3. Is it convenient to visit you?

You are welcome to visit us. So you can see how many used excavators we have in stock and the condition of them. We can pick you up at Shanghai Air port.



Shanghai Kaishu Machinery Equipment Co., Ltd.



15821620827



gavin_kaishu@163.com



[used-crawlerexcavator.com](https://www.used-crawlerexcavator.com)

No.3539 Jingdong Road, Shanghai, China