



Made in China used Sany SY55C Pro excavator 5 ton with less hour

Our Product Introduction

for more products please visit us on used-crawlerexcavator.com

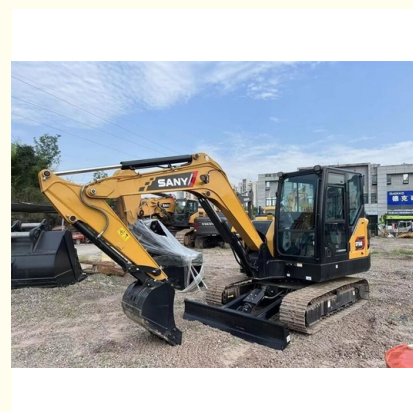
Basic Information

- Place of Origin: China
- Brand Name: Sany
- Model Number: SY55C
- Price: \$20,000.00/units 1-3 units
- Packaging Details:
 1. Bulk cargo.
 2. Flat rack.
 3. Container.
- Supply Ability: 100 Unit/Units per Month



Product Specification

- Showroom Location: None
- Operating Weight: 5780KG
- Bucket Capacity: 0.23m³
- Machine Weight: 5000 KG
- Hydraulic Cylinder Brand: Original
- Hydraulic Pump Brand: Original
- Hydraulic Valve Brand: Original
- Engine Brand: ISUZU
- Power: 36KW
- Machinery Test Report: Provided
- Video Outgoing-inspection: Provided
- Core Components: Pressure Vessel, Motor, Bearing, Gear, Pump, Gearbox, Engine, PLC
- Year: 2022
- Working Hours: 1000



More Images



Product Description

Features of Made in China used Sany SY55C Pro excavator 5 ton with less hour

1. Quality assurance:

Sany Heavy Industry strictly controls product quality to ensure that every excavator can withstand various harsh working conditions.

2. Technological innovation:

Continuously introducing advanced intelligent systems to improve mining efficiency and job safety.

3. Powerful work performance:

Equipped with a high-power engine and efficient hydraulic system, it provides strong digging and lifting power, and can quickly complete various work tasks.

4. Flexible operability:

Adopting ergonomic design, it enables operators to control the excavator's movements more comfortably and accurately.

5. Advanced technological configuration:

Adopting advanced hydraulic torque converter and hydraulic system, equipped with high-resolution LCD display screen and multifunctional operation interface.

6. Strong durability:

The use of high-strength steel and high-quality hydraulic components ensures the durability and reliability of the excavator under harsh working conditions.

7. Low energy consumption and high efficiency:

Adopting adjustable engine speed and intelligent working mode to improve fuel utilization and reduce energy consumption

Dates of Made in China used Sany SY55C Pro excavator 5 ton with less hour

| ITEM | DATA |
|----------------------------|--|
| Model | Made in China used Sany SY55C Pro excavator 5 ton with less hour |
| HS code | 8429521200 |
| Place of original | China |
| Max Bucket loading weight | 0.55 Ton |
| Engine | ISUZU GB4-4JG1 |
| Travel speed | 3.1-5.4 km/h |
| Transport length | 5925 mm |
| Transport width | 2005 mm |
| Transport height | 2595 mm |
| Max excavation radius | 6200 mm |
| Max digging depth | 3815 mm |
| Max excavation height | 5690 mm |
| Max uploading height | 3930 mm |
| Max vertical digging depth | 3070 mm |

Shipping methods of Made in China used Sany SY55C Pro excavator 5 ton with less hour

1. Bulk cargo vessel.

The used cat excavator will be put on the deck of bulk cargo vessel directly. This shipping way is cheaper, but needs longer time.

2. Flat rack.

The used cat excavator will be put in a flat rack, then load on container vessel. This shipping way is expensive, but needs short time.

3. Container.

It's the cheapest shipping way. But for big machine, it will be dismantled into many parts to put into the fill in the container. And the buyer needs to assemble after getting the container.

4. Ro-ro vessel.

This transportation method used to be frequently used, but due to the surge in China's new energy vehicle exports, most roll on/roll off ships have been leased by new energy vehicle manufacturers.

Product pictures of Made in China used Sany SY55C Pro excavator 5 ton with less hour





More models we can supply

| | |
|----------------------------|--|
| Komatsu used excavator | PC20/PC30/PC35/PC40/PC50/PC55/PC56/PC60/PC70/PC75/PC78/PC100/PC110/PC120/PC128/PC130/PC138/PC150/PC160/PC200/PC210/PC220/PC228/PC240/PC270/PC300/PC350/PC360/PC400/PC450/PC460/PC490/PC650 |
| Carter used excavator | CAT303/CAT305/CAT305.5/CAT306/CAT307/CAT308/CAT311/CAT312/CAT313/CAT315/CAT318/CAT320/CAT323/CAT324/CAT325/CAT326/CAT329/CAT330/CAT336/CAT340/CAT345/CAT349/CAT375 |
| Doosan used excavator | DH(DX)35/55/60/70/75/80/150/200/215/220/225/235/260/300/350/370/420/500/530 |
| Sany used excavator | SY16/SY35/SY55/SY60/SY65/SY75/SY85/SY95/SY115/SY135/SY155/SY205/SY215/SY235/SY265/SY305/SY335/SY365 |
| Hitachi used excavator | EX50/EX55/EX60/EX100/EX120/EX200/ZX50/ZX55/ZX60/ZX70/ZX75/ZX120/ZX125/ZX130/ZX135/ZX200/ZX210/ZX230/ZX240/ZX250/ZX270/ZX300/ZX330/ZX350/ZX360/ZX450/ZX600 |
| Kobelco used excavator | SK50/SK55/SK60/SK70/SK75/SK115/SK135/SK140/SK160/SK200/SK210/SK230/SK235/SK250/SK260/SK330/SK350/SK450/SK460 |
| Hyundai used excavator | R55/R60/R70/R75/R80/R110/R115/R130/R150/R200/R205/R210/R220/R225/R245/R305/R375/R420 |
| Kubota used excavator | 10/15/16/17/18/20/25/30/35/40/50/155/161/163/165/185 |
| Volvo used excavator | EC55/EC60/EC80/EC140/EC200/EC210/EC240/EC290/EC300/EC360/EC380/EC460/EC480 |
| Excavators of other brands | QAY,CLG,Keith,Takeuchi,Sumitomo,Yanmar,IHI,SUNWARD,Yuchai,Zoomlion |

Company Profile

Shanghai Kaishu Machinery Equipment Co., Ltd was established in 2017, we have our own factory which covers an area of 67,000 square meters, with 200 employees. As a leading used excavator supplier in China, Shanghai Kaishu Machinery Equipment Co., Ltd has numerous construction machinery. Our teams are composed of a purchasing team, a technical support team, a vehicle-parts supply center, a foreign trade sales team and a quality testing center.

Our full range of products include: used excavators, used loaders, used graders, used bulldozers, used forklifts, used cranes and other used construction machinery products. Our engineering machines are mainly from China, the United States, Japan, South Korea and other manufacturing countries, quality assurance is our hallmark. Our machines are sold to many regions at home and abroad, and we have rich export experience.

In order to serve our customers better, we deal in three(3) thousand units of construction machinery all year round and ensure delivery within 7-30 days after payment. Our team can serve you around the clock (24/7) and we hope to build a long-term business relationship with you.





Our transaction case



Accessories we can supply



QUALITY FIRST, SERVICE FOREMOST

<https://www.used-crawlerexcavator.com>
<https://shanghai.kaishu.en.alibaba.com>

FAQ

1. What's your payment terms and trade terms?

Generally 50% deposit and 50% balance before shipping. Of course, we can negotiate according to your orders. We can accept EXW, FOB, CFR and CIF.

2. How to ship the excavators?

- (1). Container: which is cheapest and fast. but sometime machine need to be dismantled .
- (2). Bulk cargo ship :which is better for bigger construction equipment ,ship as it is.
- (3). Flat rack ship :which is better for bigger machine and also no need to dismantle
- (4). RO RO ship : which is good for every machine and faster

3. Is it convenient to visit you?

You are welcome to visit us. So you can see how many used excavators we have in stock and the condition of them. We can pick you up at Shanghai Air port.



Shanghai Kaishu Machinery Equipment Co., Ltd.



15821620827



gavin_kaishu@163.com



[used-crawlerexcavator.com](https://www.used-crawlerexcavator.com)

No.3539 Jingdong Road, Shanghai, China