



## Made in Japan secondhand used Kobelco SK55SR excavator 5 ton with original parts

Our Product Introduction

for more products please visit us on [used-crawlerexcavator.com](http://used-crawlerexcavator.com)

### Basic Information

- Place of Origin: Japan
- Brand Name: Kobelco
- Model Number: SK55SR
- Price: \$13,000.00/units 1-3 units



### Product Specification

- Showroom Location: None
- Operating Weight: 5500 KG
- Bucket Capacity: 0.26 M³
- Machine Weight: 5000 KG
- Hydraulic Cylinder Brand: Original
- Hydraulic Pump Brand: Original
- Hydraulic Valve Brand: Original
- Engine Brand: ISUZU
- Power: 28 KW
- Machinery Test Report: Provided
- Video Outgoing-inspection: Provided
- Core Components: Pressure Vessel, Motor, Bearing, Gear, Pump, Gearbox, Engine, PLC
- Year: 2021
- Working Hours: 1800



### More Images



## Product Description

### Features of Made in Japan used Kobelco SK55SR excavator 5 ton with original parts

#### 1. Strong power:

The Shengang excavator is equipped with a high-performance engine, ensuring sufficient power output and improving work efficiency. A powerful power system that can provide sufficient power to ensure efficient operation of the excavator under various working conditions.

#### 2. Stable and reliable performance:

The structural design of excavators is stable and can work stably in various complex environments, improving the safety of operators.

#### 3. Convenient operation:

The excavator adopts advanced control system, precise control lever and adjustable seats, making it easy for the driver to operate and adapt to drivers of different heights. This improves operational efficiency while also providing a comfortable driving environment.

#### 4. High precision:

Excavators are equipped with high-precision hydraulic systems and precise control technology, which can accurately perform various operations and improve work quality.

#### 5. High fuel economy:

By adopting advanced fuel injection technology and optimized combustion system, Shengang excavator can effectively utilize fuel, reduce fuel consumption, and improve fuel economy.

#### 6. Durable and reliable:

The Shengang excavator is made of high-strength steel, which has excellent durability and reliability. It can work in various harsh construction environments and has a long service life

### Dates of Made in Japan used Kobelco SK55SR excavator 5 ton with original parts

ITEM	DATA
Model	Made in Japan used Kobelco SK55SR excavator 5 ton with original parts
HS code	8429521200
Place of original	Japan
Max Bucket loading weight	0.55 Ton
Engine	Yanmar 4TNV88-B
Travel speed	3.1-5.4 km/h
Transport length	5560 mm
Transport width	1960 mm
Transport height	2530 mm
Max excavation radius	6200 mm
Max digging depth	3900 mm
Max excavation height	5930 mm
Max uploading height	4350 mm
Max vertical digging depth	3130 mm

### Shipping methods of Made in Japan used Kobelco SK55SR excavator 5 ton with original parts

#### 1. Bulk cargo vessel.

The used cat excavator will be put on the deck of bulk cargo vessel directly. This shipping way is cheaper, but needs longer time.

#### 2. Flat rack.

The used cat excavator will be put in a flat rack, then load on container vessel. This shipping way is expensive, but needs short time.

#### 3. Container.

It's the cheapest shipping way. But for big machine, it will be dismantled into many parts to put into the fill in the container. And the buyer needs to assemble after getting the container.

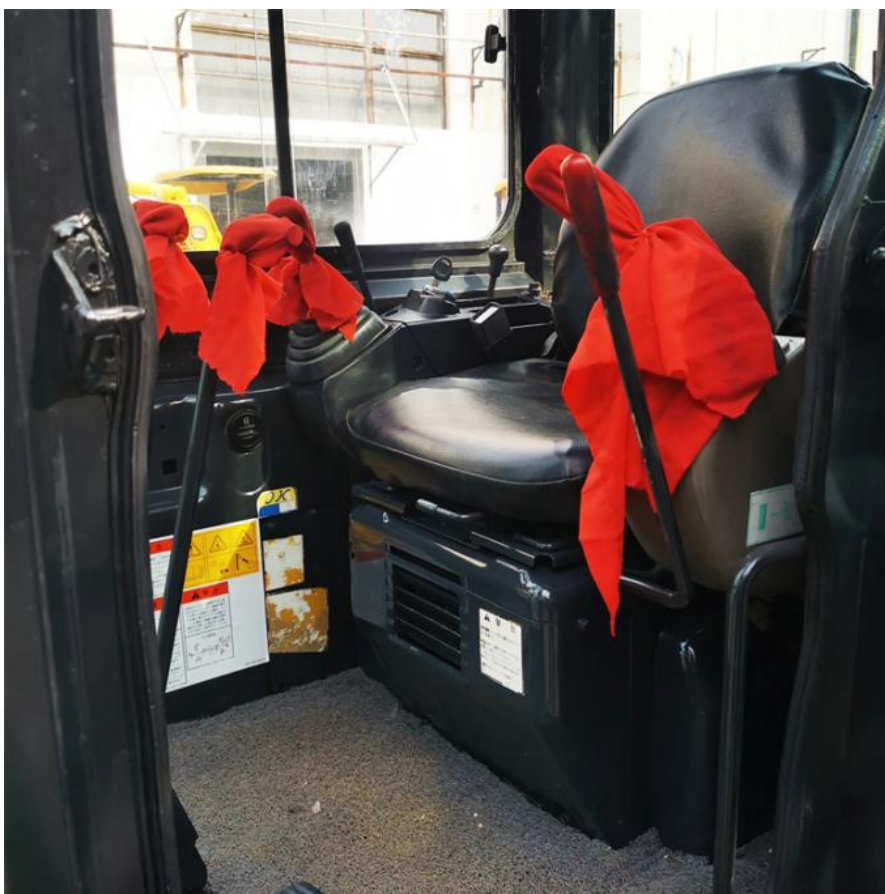
#### 4. Ro-ro vessel.

This transportation method used to be frequently used, but due to the surge in China's new energy vehicle exports, most roll on/roll off ships have been leased by new energy vehicle manufacturers.

### Product pictures of Made in Japan used Kobelco SK55SR excavator 5 ton with original parts







#### More models we can supply

Komatsu used excavator	PC20/PC30/PC35/PC40/PC50/PC55/PC56/PC60/PC70/PC75/PC78/PC100/PC1
	10/PC120/PC128/PC130/PC138/PC150/PC160/PC200/PC210/PC220/PC228/PC240/PC270/PC300/PC350/PC360/PC400/PC450/PC460/PC490/PC650

Carter used excavator	CAT303/CAT305/CAT305.5/CAT306/CAT307/CAT308/CAT311/CAT312/CAT313/CAT315/CAT318/CAT320/CAT323/CAT324/CAT325/CAT326/CAT329/CAT330/CAT336/CAT340/CAT345/CAT349/CAT375
Doosan used excavator	DH(DX)35/55/60/70/75/80/150/200/215/220/225/235/260/300/350/370/420/500/530
Sany used excavator	SY16/SY35/SY55/SY60/SY65/SY75/SY85/SY95/SY115/SY135/SY155/SY205/SY215/SY235/SY265/SY305/SY335/SY365
Hitachi used excavator	EX50/EX55/EX60/EX100/EX120/EX200/ZX50/ZX55/ZX60/ZX70/ZX75/ZX120/ZX125/ZX130/ZX135/ZX200/ZX210/ZX230/ZX240/ZX250/ZX270/ZX300/ZX330/ZX350/ZX360/ZX450/ZX600
Kobelco used excavator	SK50/SK55/SK60/SK70/SK75/SK115/SK135/SK140/SK160/SK200/SK210/SK230/SK235/SK250/SK260/SK330/SK350/SK450/SK460
Hyundai used excavator	R55/R60/R70/R75/R80/R110/R115/R130/R150/R200/R205/R210/R220/R225/R245/R305/R375/R420
Kubota used excavator	10/15/16/17/18/20/25/30/35/40/50/155/161/163/165/185
Volvo used excavator	EC55/EC60/EC80/EC140/EC200/EC210/EC240/EC290/EC300/EC360/EC380/EC460/EC480
Excavators of other brands	QAY,CLG,Keith,Takeuchi,Sumitomo,Yanmar,IHI,SUNWARD,Yuchai,Zoomlion

### Company Profile

**Shanghai Kaishu Machinery Equipment Co., Ltd** was established in 2017, we have our own factory which covers an area of 67,000 square meters, with 200 employees. As a leading used excavator supplier in China, Shanghai Kaishu Machinery Equipment Co., Ltd has numerous construction machinery. Our teams are composed of a purchasing team, a technical support team, a vehicle-parts supply center, a foreign trade sales team and a quality testing center.

Our full range of products include: used excavators, used loaders, used graders, used bulldozers, used forklifts, used cranes and other used construction machinery products. Our engineering machines are mainly from China, the United States, Japan, South Korea and other manufacturing countries, quality assurance is our hallmark. Our machines are sold to many regions at home and abroad, and we have rich export experience.

In order to serve our customers better, we deal in three(3) thousand units of construction machinery all year round and ensure delivery within 7-30 days after payment. Our team can serve you around the clock (24/7) and we hope to build a long-term business relationship with you.





Our transaction case





**Accessories we can supply**



QUALITY FIRST, SERVICE FOREMOST

<https://www.used-crawlerexcavator.com>  
<https://shanghaikaishu.en.alibaba.com>

## FAQ

### 1.What's your payment terms and trade terms?

Generally 50% deposit and 50% balance before shipping. Of course, we can negotiate according to your orders. We can accept EXW, FOB, CRF and CIF.

### 2. How to ship the excavators?

- (1).Container: which is cheapest and fast. but sometime machine need to be dismantled .
- (2).Bulk cargo ship :which is better for bigger construction equipment ,ship as it is.
- (3).Flat rack ship :which is better for bigger machine and also no need to dismantle
- (4).RO RO ship : which is good for every machine and faster

### 3. Is it convenient to visit you?

You are welcome to visit us. So you can see how many used excavators we have in stock and the condition of them. We can pick you up at Shanghai Air port.



**Shanghai Kaishu Machinery Equipment Co., Ltd.**



15821620827



[gavin\\_kaishu@163.com](mailto:gavin_kaishu@163.com)



[used-crawlerexcavator.com](https://www.used-crawlerexcavator.com)

No.3539 Jingdong Road, Shanghai, China