



## Made in Korea original used doosan dx300 excavator 30 ton for sale

Our Product Introduction

for more products please visit us on [used-crawlerexcavator.com](http://used-crawlerexcavator.com)

### Basic Information

- Place of Origin: South Korea
- Brand Name: Doosan
- Model Number: DX300
- Price: \$36,000.00/units 1-3 units

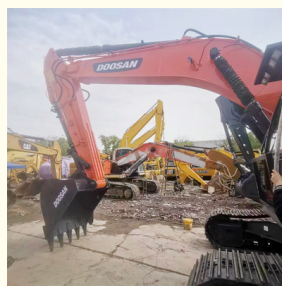


### Product Specification

- Showroom Location: None
- Operating Weight: 29500 KG
- Bucket Capacity: 1.27 M³
- Machine Weight: 30000 KG
- Hydraulic Cylinder Brand: Original
- Hydraulic Pump Brand: Original
- Hydraulic Valve Brand: Original
- Engine Brand: Doosan
- Power: 151 KW
- Machinery Test Report: Provided
- Video Outgoing-inspection: Provided
- Core Components: Pressure Vessel, Motor, Bearing, Gear, Pump, Gearbox, Engine, PLC
- Year: 2022
- Working Hours: 891



### More Images



## Product Description

### Features of Made in Korea original used doosan dx300 excavator 30 ton for sale

#### 1. Reasonable structural design.

The Doosan excavator adopts advanced hydraulic system and numerous high-quality components to ensure its stability and durability. It generates great power, efficiently excavates, and can also achieve more complex mining operations.

#### 2. High work efficiency.

The Doosan excavator adopts an intelligent control system with precise operation control, meeting the multifunctional operation requirements of movement, rotation, lifting, and excavation. At the same time, it also has a high-intensity working device that can adapt to various working environments and complex terrains, with extremely high work efficiency.

#### 3. Easy maintenance.

The Doosan excavator is very user-friendly, designed with easy to disassemble components, which not only allows for easy replacement and maintenance of auxiliary equipment, but also significantly reduces the actual maintenance time.

#### 4. Good stability.

The structure of Doosan excavator is sturdy, and it can effectively reduce the vibration of the excavator under micro motion, improve the bearing capacity, and maintain stability during operation. In short, Doosan excavator has mature technology, stable performance, and high durability, making it one of the better excavator brands in the market and worthy of wide application.

### Dates of Made in Korea original used doosan dx300 excavator 30 ton for sale

| ITEM                       | DATA   |
|----------------------------|--|
| Model                      | Made in Korea original used doosan dx300 excavator 30 ton for sale |
| HS code                    | 8429521200   |
| Place of original          | South Korea  |
| Max Bucket loading weight  | 3 Ton  |
| Engine                     | Doosan D1146TA   |
| Travel speed               | 3.2-5.3 km/h   |
| Transport length           | 10620 mm   |
| Transport width            | 3200 mm  |
| Transport height           | 3345 mm  |
| Max excavation radius      | 10680 mm   |
| Max digging depth          | 7360 mm  |
| Max excavation height      | 10325 mm   |
| Max uploading height       | 7260 mm  |
| Max vertical digging depth | 6190 mm  |

### Shipping methods of Made in Korea original used doosan dx300 excavator 30 ton for sale

#### 1. Bulk cargo vessel.

The used cat excavator will be put on the deck of bulk cargo vessel directly. This shipping way is cheaper, but needs longer time.

#### 2. Flat rack.

The used cat excavator will be put in a flat rack, then load on container vessel. This shipping way is expensive, but needs short time.

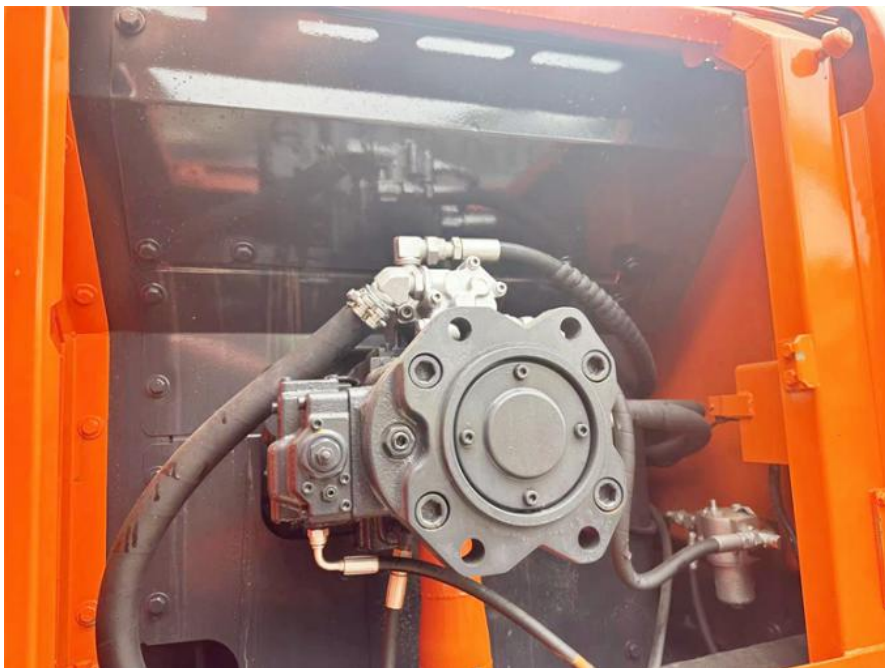
#### 3. Container.

It's the cheapest shipping way. But for big machine, it will be dismantled into many parts to put into the fill in the container. And the buyer needs to assemble after getting the container.

#### 4. Ro-ro vessel.

This transportation method used to be frequently used, but due to the surge in China's new energy vehicle exports, most roll on/roll off ships have been leased by new energy vehicle manufacturers.

### Product pictures of Made in Korea original used doosan dx300 excavator 30 ton for sale









#### More models we can supply

|                            |  |
|----------------------------|--|
| Komatsu used excavator     | PC20/PC30/PC35/PC40/PC50/PC55/PC56/PC60/PC70/PC75/PC78/PC100/PC110/PC120/PC128/PC130/PC138/PC150/PC160/PC200/PC210/PC220/PC228/PC240/PC270/PC300/PC350/PC360/PC400/PC450/PC460/PC490/PC650 |
| Caterpillar used excavator | CAT303/CAT305/CAT305.5/CAT306/CAT307/CAT308/CAT311/CAT312/CAT313/CAT315/CAT318/CAT320/CAT323/CAT324/CAT325/CAT326/CAT329/CAT330/CAT336/CAT340/CAT345/CAT349/CAT375                         |
| Doosan used excavator      | DH(DX)35/55/60/70/75/80/150/200/215/220/225/235/260/300/350/370/420/500/530  |
| Sany used excavator        | SY16/SY35/SY55/SY60/SY65/SY75/SY85/SY95/SY115/SY135/SY155/SY205/SY215/SY235/SY265/SY305/SY335/SY365  |
| Hitachi used excavator     | EX50/EX55/EX60/EX100/EX120/EX200/ZX50/ZX55/ZX60/ZX70/ZX75/ZX120/ZX125/ZX130/ZX135/ZX200/ZX210/ZX230/ZX240/ZX250/ZX270/ZX300/ZX330/ZX350/ZX360/ZX450/ZX600                                  |
| Kobelco used excavator     | SK50/SK55/SK60/SK70/SK75/SK115/SK135/SK140/SK160/SK200/SK210/SK230/SK235/SK250/SK260/SK330/SK350/SK450/SK460   |
| Hyundai used excavator     | R55/R60/R70/R75/R80/R110/R115/R130/R150/R200/R205/R210/R220/R225/R245/R305/R375/R420   |
| Kubota used excavator      | 10/15/16/17/18/20/25/30/35/40/50/155/161/163/165/185   |
| Volvo used excavator       | EC55/EC60/EC80/EC140/EC200/EC210/EC240/EC290/EC300/EC360/EC380/EC460/EC480   |
| Excavators of other brands | QAY, CLG, Keith, Takeuchi, Sumitomo, Yanmar, IHI, SUNWARD, Yuchai, Zoomlion  |

#### Company Profile

**Shanghai Kaishu Machinery Equipment Co., Ltd** was established in 2017, we have our own factory which covers an area of 67,000 square meters, with 200 employees. As a leading used excavator supplier in China, Shanghai Kaishu Machinery Equipment Co., Ltd has numerous construction machinery. Our teams are composed of a purchasing team, a technical support team, a vehicle-parts supply center, a foreign trade sales team and a quality testing center.



Our full range of products include: used excavators, used loaders, used graders, used bulldozers, used forklifts, used cranes and other used construction machinery products. Our engineering machines are mainly from China, the United States, Japan, South Korea and other manufacturing countries, quality assurance is our hallmark. Our machines are sold to many regions at home and abroad, and we have rich export experience.

In order to serve our customers better, we deal in three(3) thousand units of construction machinery all year round and ensure delivery within 7-30 days after payment. Our team can serve you around the clock (24/7) and we hope to build a long-term business relationship with you.

Our office and team



Our stocks



**Our transaction case**



**Accessories we can supply**



QUALITY FIRST, SERVICE FOREMOST

<https://www.used-crawlerexcavator.com>  
<https://shanghaikaishu.en.alibaba.com>

## FAQ

### 1. What's your payment terms and trade terms?

Generally 50% deposit and 50% balance before shipping. Of course, we can negotiate according to your orders. We can accept EXW, FOB, CRF and CIF.

### 2. How to ship the excavators?

- (1). Container: which is cheapest and fast. but sometime machine need to be dismantled .
- (2). Bulk cargo ship :which is better for bigger construction equipment ,ship as it is.
- (3). Flat rack ship :which is better for bigger machine and also no need to dismantle
- (4). RO RO ship : which is good for every machine and faster

### 3. Is it convenient to visit you?

You are welcome to visit us. So you can see how many used excavators we have in stock and the condition of them. We can pick you up at Shanghai Air port.



**Shanghai Kaishu Machinery Equipment Co., Ltd.**



15821620827



[gavin\\_kaishu@163.com](mailto:gavin_kaishu@163.com)



[used-crawlerexcavator.com](https://www.used-crawlerexcavator.com)

No.3539 Jingdong Road, Shanghai, China