



## Good Condition Japan Original 12 Ton ZX135 Hitachi Excavator Bucket Capacity 0.59 m3

Our Product Introduction

for more products please visit us on [used-crawlerexcavator.com](http://used-crawlerexcavator.com)

### Basic Information

- Place of Origin: China
- Price: \$23,000.00/units 1-3 units



### Product Specification

- Showroom Location: None
- Operating Weight: 13600 KG
- Bucket Capacity: 0.59 M³
- Machine Weight: 13000 KG
- Hydraulic Cylinder Brand: Original
- Hydraulic Pump Brand: Original
- Hydraulic Valve Brand: Original
- Engine Brand: ISUZU
- Power: 93 KW
- Machinery Test Report: Provided
- Video Outgoing-inspection: Provided
- Core Components: Pressure Vessel, Motor, Bearing, Gear, Pump, Gearbox, Engine, PLC
- Year: 2020
- Working Hours: 2657



### More Images



## Product Description

### Product Description



Our Product Introduction

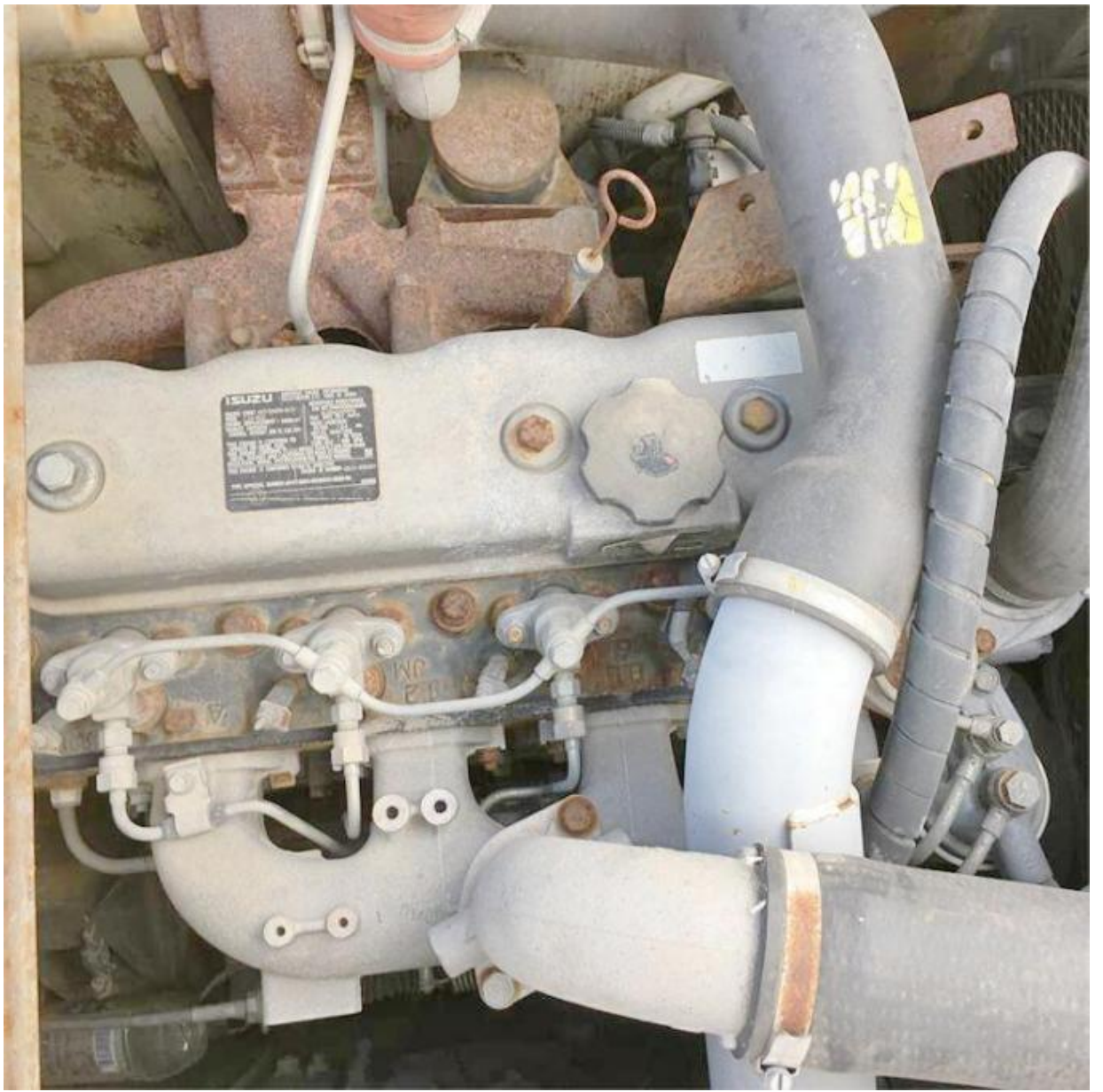
for more products please visit us on [used-crawlerexcavator.com](http://used-crawlerexcavator.com)

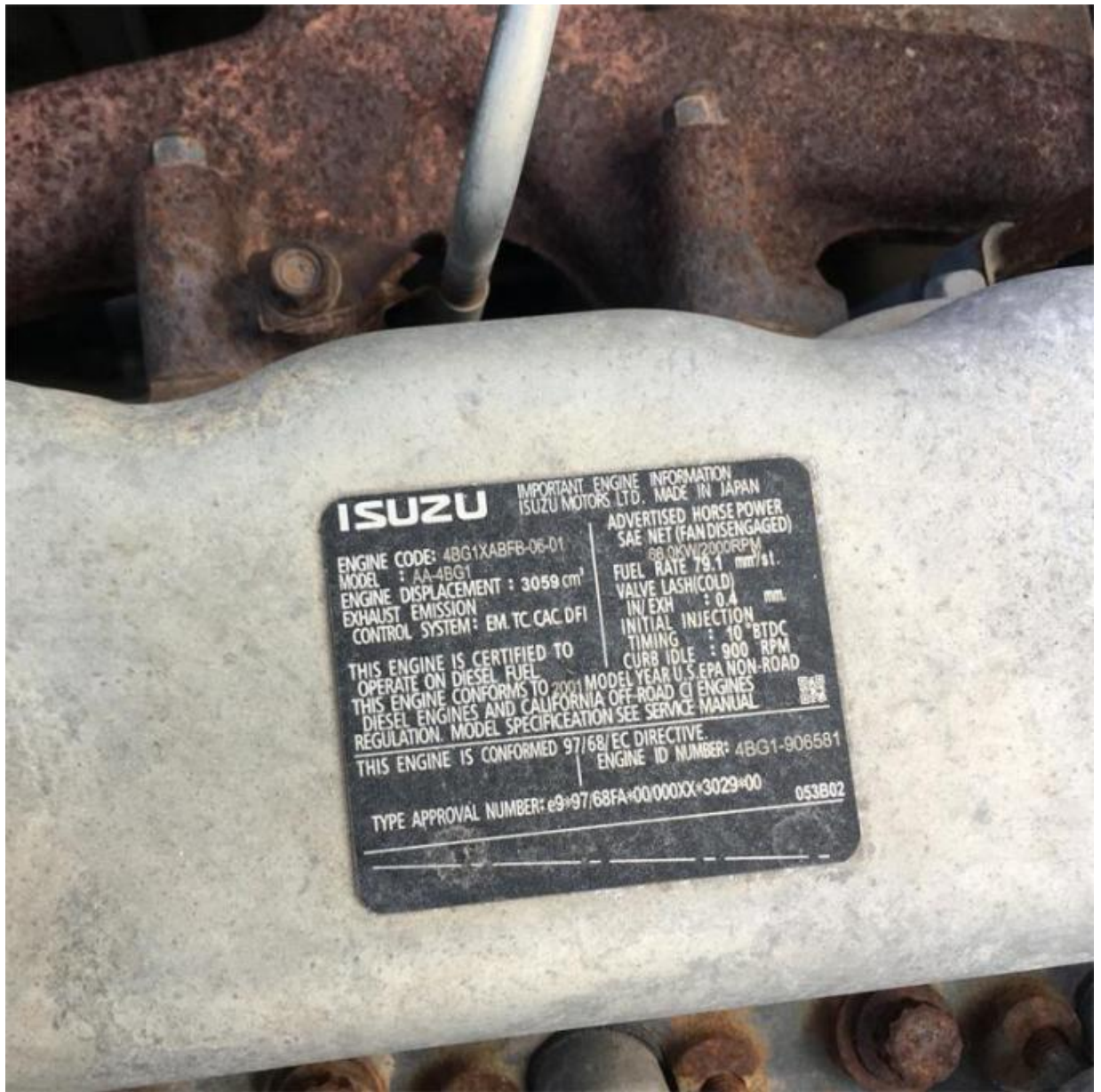












**ISUZU**

IMPORTANT ENGINE INFORMATION  
ISUZU MOTORS LTD. MADE IN JAPAN

ENGINE CODE: 4BG1XABFB-06-01  
MODEL : AA-4BG1  
ENGINE DISPLACEMENT : 3059 cm<sup>3</sup>  
EXHAUST EMISSION  
CONTROL SYSTEM: EM, TC, CAC, DFI

ADVERTISED HORSE POWER  
SAE NET (FAN DISENGAGED)  
6800W/2000RPM  
FUEL RATE 79.1 mm<sup>3</sup>/st.  
VALVE LASH(COLD)  
IN/EXH : 0.4 mm.  
INITIAL INJECTION  
TIMING : 10° BTDC  
CURB IDLE : 900 RPM

THIS ENGINE IS CERTIFIED TO  
OPERATE ON DIESEL FUEL  
THIS ENGINE CONFORMS TO 2001 MODEL YEAR U.S. EPA NON-ROAD  
DIESEL ENGINES AND CALIFORNIA OFF-ROAD CI ENGINES  
REGULATION. MODEL SPECIFICATION SEE SERVICE MANUAL

THIS ENGINE IS CONFORMED 97/68/EC DIRECTIVE.

ENGINE ID NUMBER: 4BG1-906581

TYPE APPROVAL NUMBER: e9-97/68FA-00/000XX-3029-00

053B02





## Models Of Excavators We Sell

Komatsu used excavator	PC20/PC30/PC35/PC40/PC50/PC55/PC56/PC60/PC70/PC75/PC78/PC100/PC110/PC120/PC128/PC130/PC138/PC150/PC160/PC200/PC210/PC220/PC228/PC240/PC270/PC300/PC350/PC360/PC400/PC450/PC460/PC490/PC650
Carter used excavator	CAT303/CAT305/CAT305.5/CAT306/CAT307/CAT308/CAT311/CAT312/CAT313/CAT315/CAT318/CAT320/CAT323/CAT324/CAT325/CAT326/CAT329/CAT330/CAT336/CAT340/CAT345/CAT349/CAT375
Doosan used excavator	DH(DX)35/55/60/70/75/80/150/200/215/220/225/235/260/300/350/370/420/500/530
Sany used excavator	SY16/SY35/SY55/SY60/SY65/SY75/SY85/SY95/SY115/SY135/SY155/SY205/SY215/SY235/SY265/SY305/SY335/SY365
Hitachi used excavator	EX50/EX55/EX60/EX100/EX120/EX200/ZX50/ZX55/ZX60/ZX70/ZX75/ZX120/ZX125/ZX130/ZX135/ZX200/ZX210/ZX230/ZX240/ZX250/ZX270/ZX300/ZX330/ZX350/ZX360/ZX450/ZX600
Kobelco used excavator	SK50/SK55/SK60/SK70/SK75/SK115/SK135/SK140/SK160/SK200/SK210/SK230/SK235/SK250/SK260/SK330/SK350/SK450/SK460
Hyundai used excavator	R55/R60/R70/R75/R80/R110/R115/R130/R150/R200/R205/R210/R220/R225/R245/R305/R375/R420
Kubota used excavator	10/15/16/17/18/20/25/30/35/40/50/155/161/163/165/185
Volvo used excavator	EC55/EC60/EC80/EC140/EC200/EC210/EC240/EC290/EC300/EC360/EC380/EC460/EC480
Excavators of other brands	QAY CLG Keith Takeuchi Sumitomo Yanmar IHI SUNWARD Yuchai Zoomlion

## Company Profile

**Shanghai Kaishu Machinery Equipment Co., Ltd** was established in 2017, we have our own factory which covers an area of 67,000 square meters, with 200 employees. As a leading used excavator supplier in China, Shanghai Kaishu Machinery Equipment Co., Ltd has numerous construction machinery. Our teams are composed of a purchasing team, a technical support team, a vehicle-parts supply center, a foreign trade sales team and a quality testing center.

Our full range of products include: used excavators, used loaders, used graders, used bulldozers, used forklifts, used cranes and other used construction machinery products. Our engineering machines are mainly from China, the United States, Japan, South Korea and other manufacturing countries, quality assurance is our hallmark. Our machines are sold to many regions at home and abroad, and we have rich export experience.

In order to serve our customers better, we deal in three(3) thousand units of construction machinery all year round and ensure delivery within 7-30 days after payment. Our team can serve you around the clock (24/7) and we hope to build a long-term business relationship with you.

### Our office and team



### Our stocks



## Our transaction case





We can provide other accessory devices

---



**Pier cut**



**Telescopic arm**



**Crushed pliers**



**Lengthent**



**Clip wood**



**Dug up**



**Quick connector**



**Hydraulic shear**



**Vibration**

## FAQ

### 1. What's your payment terms and trade terms?

Generally 50% deposit and 50% balance before shipping. Of course, we can negotiate according to your orders. We can accept EXW, FOB, CRF and CIF.

### 2. How to ship the excavators?

- (1). Container: which is cheapest and fast. but sometime machine need to be dismantled .
- (2). Bulk cargo ship :which is better for bigger construction equipment ,ship as it is.
- (3). Flat rack ship :which is better for bigger machine and also no need to dismantle
- (4). RO RO ship : which is good for every machine and faster

### 3. Is it convenient to visit you?

You are welcome to visit us. So you can see how many used excavators we have in stock and the condition of them. We can pick you up at Shanghai Air port.



**Shanghai Kaishu Machinery Equipment Co., Ltd.**



15821620827



[gavin\\_kaishu@163.com](mailto:gavin_kaishu@163.com)



[used-crawlerexcavator.com](http://used-crawlerexcavator.com)

No.3539 Jingdong Road, Shanghai, China