



15 Ton Volvo EC140 Track Digger With 12920KG Operating Weight And 0.5m³ Bucket Capacity

Our Product Introduction

for more products please visit us on used-crawlerexcavator.com

Basic Information

- Place of Origin: Sweden
- Price: \$25,700.00/units 1-3 units

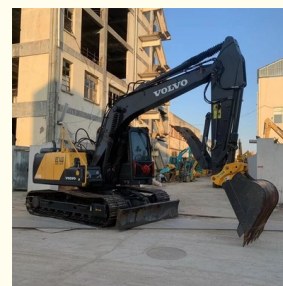


Product Specification

- Showroom Location: None
- Operating Weight: 12920KG
- Bucket Capacity: 0.5m³
- Machine Weight: 14000 KG
- Hydraulic Cylinder Brand: ORIGINAL
- Hydraulic Pump Brand: ORIGINAL
- Hydraulic Valve Brand: ORIGINAL
- Engine Brand: Volvo
- Power: 77.4KW
- Machinery Test Report: Provided
- Video Outgoing-inspection: Provided
- Core Components: Pressure Vessel, Motor, Bearing, Gear, Pump, Gearbox, Engine, PLC
- Year: 2023
- Working Hours: 800



More Images



Product Description

Product Description

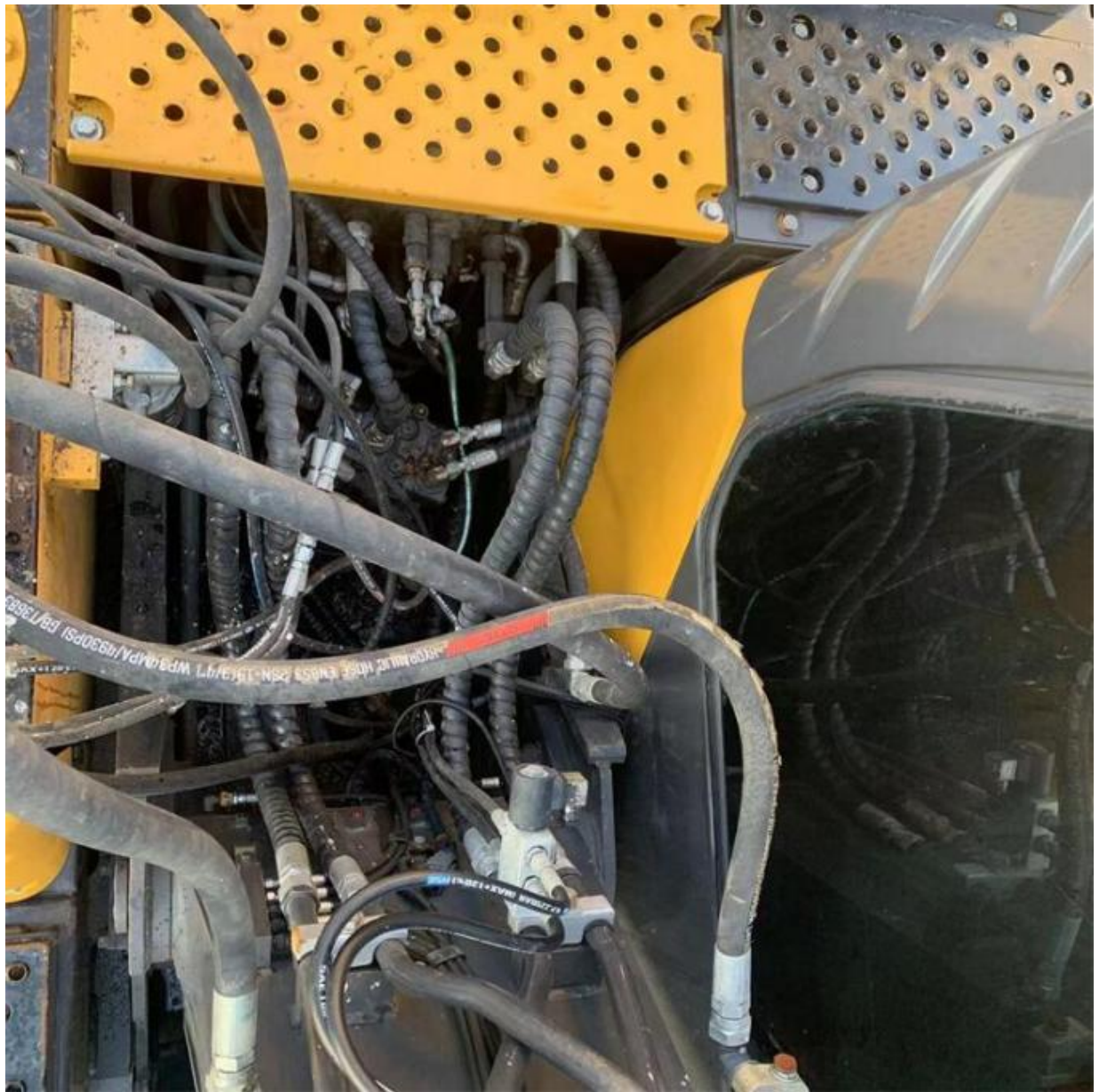


Our Product Introduction

for more products please visit us on used-crawlerexcavator.com







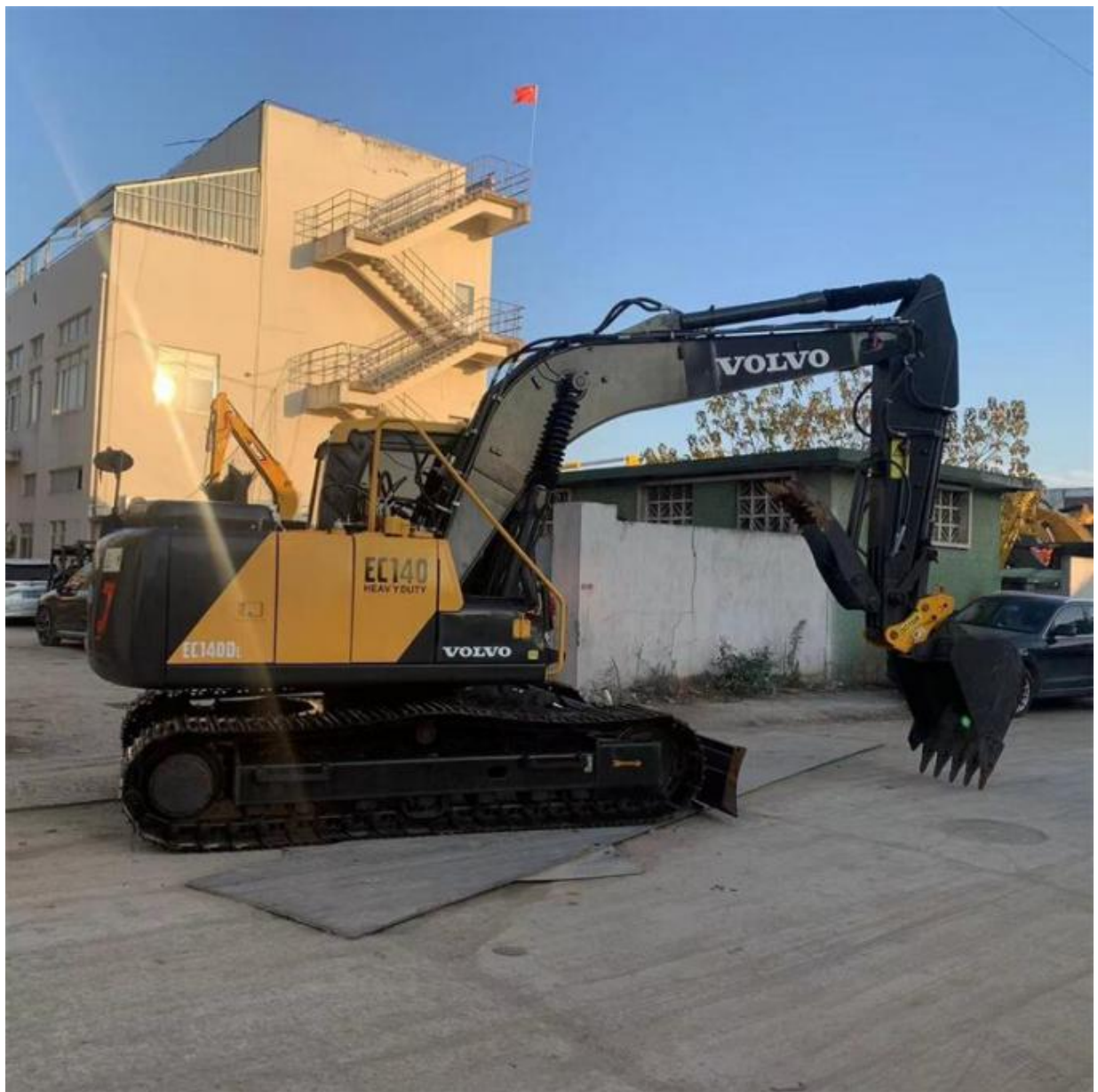












Models Of Excavators We Sell

| | |
|----------------------------|--|
| Komatsu used excavator | PC20/PC30/PC35/PC40/PC50/PC55/PC56/PC60/PC70/PC75/PC78/PC100/PC110/PC120/PC128/PC130/PC138/PC150/PC160/PC200/PC210/PC220/PC228/PC240/PC270/PC300/PC350/PC360/PC400/PC450/PC460/PC490/PC650 |
| Carter used excavator | CAT303/CAT305/CAT305.5/CAT306/CAT307/CAT308/CAT311/CAT312/CAT313/CAT315/CAT318/CAT320/CAT323/CAT324/CAT325/CAT326/CAT329/CAT330/CAT336/CAT340/CAT345/CAT349/CAT375 |
| Doosan used excavator | DH(DX)35/55/60/70/75/80/150/200/215/220/225/235/260/300/350/370/420/500/530 |
| Sany used excavator | SY16/SY35/SY55/SY60/SY65/SY75/SY85/SY95/SY115/SY135/SY155/SY205/SY215/SY235/SY265/SY305/SY335/SY365 |
| Hitachi used excavator | EX50/EX55/EX60/EX100/EX120/EX200/ZX50/ZX55/ZX60/ZX70/ZX75/ZX120/ZX125/ZX130/ZX135/ZX200/ZX210/ZX230/ZX240/ZX250/ZX270/ZX300/ZX330/ZX350/ZX360/ZX450/ZX600 |
| Kobelco used excavator | SK50/SK55/SK60/SK70/SK75/SK115/SK135/SK140/SK160/SK200/SK210/SK230/SK235/SK250/SK260/SK330/SK350/SK450/SK460 |
| Hyundai used excavator | R55/R60/R70/R75/R80/R110/R115/R130/R150/R200/R205/R210/R220/R225/R245/R305/R375/R420 |
| Kubota used excavator | 10/15/16/17/18/20/25/30/35/40/50/155/161/163/165/185 |
| Volvo used excavator | EC55/EC60/EC80/EC140/EC200/EC210/EC240/EC290/EC300/EC360/EC380/EC460/EC480 |
| Excavators of other brands | QAY CLG Keith Takeuchi Sumitomo Yanmar IHI SUNWARD Yuchai Zoomlion |

Company Profile

Shanghai Kaishu Machinery Equipment Co., Ltd was established in 2017, we have our own factory which covers an area of 67,000 square meters, with 200 employees. As a leading used excavator supplier in China, Shanghai Kaishu Machinery Equipment Co., Ltd has numerous construction machinery. Our teams are composed of a purchasing team, a technical support team, a vehicle-parts supply center, a foreign trade sales team and a quality testing center.

Our full range of products include: used excavators, used loaders, used graders, used bulldozers, used forklifts, used cranes and other used construction machinery products. Our engineering machines are mainly from China, the United States, Japan, South Korea and other manufacturing countries, quality assurance is our hallmark. Our machines are sold to many regions at home and abroad, and we have rich export experience.

In order to serve our customers better, we deal in three(3) thousand units of construction machinery all year round and ensure delivery within 7-30 days after payment. Our team can serve you around the clock (24/7) and we hope to build a long-term business relationship with you.

Our office and team



Our stocks



Our transaction case



We can provide other accessory devices



Pier cut



Telescopic arm



Crushed pliers



Lengthent



Clip wood



Dug up



Quick connector



Hydraulic shear



Vibration

FAQ

1. What's your payment terms and trade terms?

Generally 50% deposit and 50% balance before shipping. Of course, we can negotiate according to your orders. We can accept EXW, FOB, CRF and CIF.

2. How to ship the excavators?

- (1). Container: which is cheapest and fast. but sometime machine need to be dismantled .
- (2). Bulk cargo ship :which is better for bigger construction equipment ,ship as it is.
- (3). Flat rack ship :which is better for bigger machine and also no need to dismantle
- (4). RO RO ship : which is good for every machine and faster

3. Is it convenient to visit you?

You are welcome to visit us. So you can see how many used excavators we have in stock and the condition of them. We can pick you up at Shanghai Air port.



Shanghai Kaishu Machinery Equipment Co., Ltd.



15821620827



gavin_kaishu@163.com



used-crawlerexcavator.com

No.3539 Jingdong Road, Shanghai, China