



Made in Korea original used doosan dh80-7 excavator 8 ton in Shanghai

Our Product Introduction

for more products please visit us on used-crawlerexcavator.com

Basic Information

- Place of Origin: South Korea
- Brand Name: Doosan
- Model Number: DH80-7
- Price: \$13,000.00/units 1-3 units



Product Specification

- Showroom Location: None
- Operating Weight: 7830 KG
- Bucket Capacity: 0.28 M³
- Machine Weight: 8000 KG
- Hydraulic Cylinder Brand: Original
- Hydraulic Pump Brand: Original
- Hydraulic Valve Brand: Original
- Engine Brand: Doosan
- Power: 41.4 KW
- Machinery Test Report: Provided
- Video Outgoing-inspection: Provided
- Core Components: Pressure Vessel, Motor, Bearing, Gear, Pump, Gearbox, Engine, PLC
- Year: 2019
- Working Hours: 2901



More Images



Product Description

Features of Made in Korea original used doosan dh80-7 excavator 8 ton in Shanghai

1. Reasonable structural design.

The Doosan excavator adopts advanced hydraulic system and numerous high-quality components to ensure its stability and durability. It generates great power, efficiently excavates, and can also achieve more complex mining operations.

2. High work efficiency.

The Doosan excavator adopts an intelligent control system with precise operation control, meeting the multifunctional operation requirements of movement, rotation, lifting, and excavation. At the same time, it also has a high-intensity working device that can adapt to various working environments and complex terrains, with extremely high work efficiency.

3. Easy maintenance.

The Doosan excavator is very user-friendly, designed with easy to disassemble components, which not only allows for easy replacement and maintenance of auxiliary equipment, but also significantly reduces the actual maintenance time.

4. Good stability.

The structure of Doosan excavator is sturdy, and it can effectively reduce the vibration of the excavator under micro motion, improve the bearing capacity, and maintain stability during operation. In short, Doosan excavator has mature technology, stable performance, and high durability, making it one of the better excavator brands in the market and worthy of wide application.

Dates of Made in Korea original used doosan dh80-7 excavator 8 ton in Shanghai

ITEM	DATA
Model	Made in Korea original used doosan dh80-7 excavator 8 ton in Shanghai
HS code	8429521200
Place of original	South Korea
Max Bucket loading weight	0.8 Ton
Engine	Doosan DL06
Travel speed	3.2-5.3 km/h
Transport length	6280 mm
Transport width	2200 mm
Transport height	2420 mm
Max excavation radius	6300 mm
Max digging depth	4020 mm
Max excavation height	6380 mm
Max uploading height	4395 mm
Max vertical digging depth	3090 mm

Shipping methods of Made in Korea original used doosan dh80-7 excavator 8 ton in Shanghai

1. Bulk cargo vessel.

The used cat excavator will be put on the deck of bulk cargo vessel directly. This shipping way is cheaper, but needs longer time.

2. Flat rack.

The used cat excavator will be put in a flat rack, then load on container vessel. This shipping way is expensive, but needs short time.

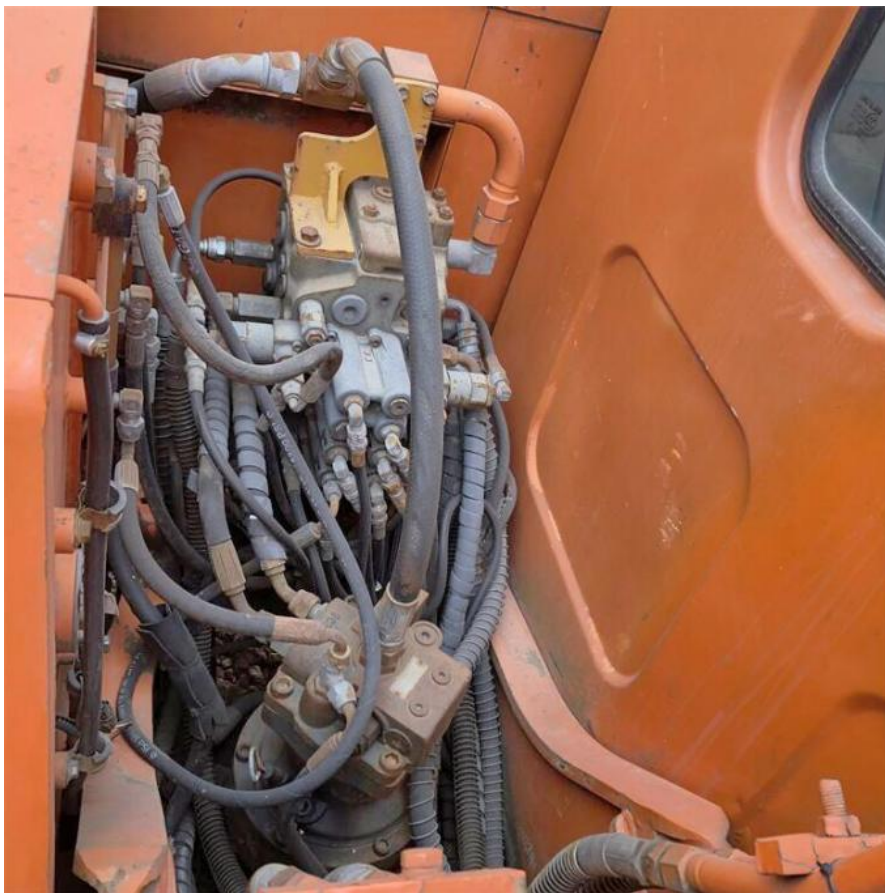
3. Container.

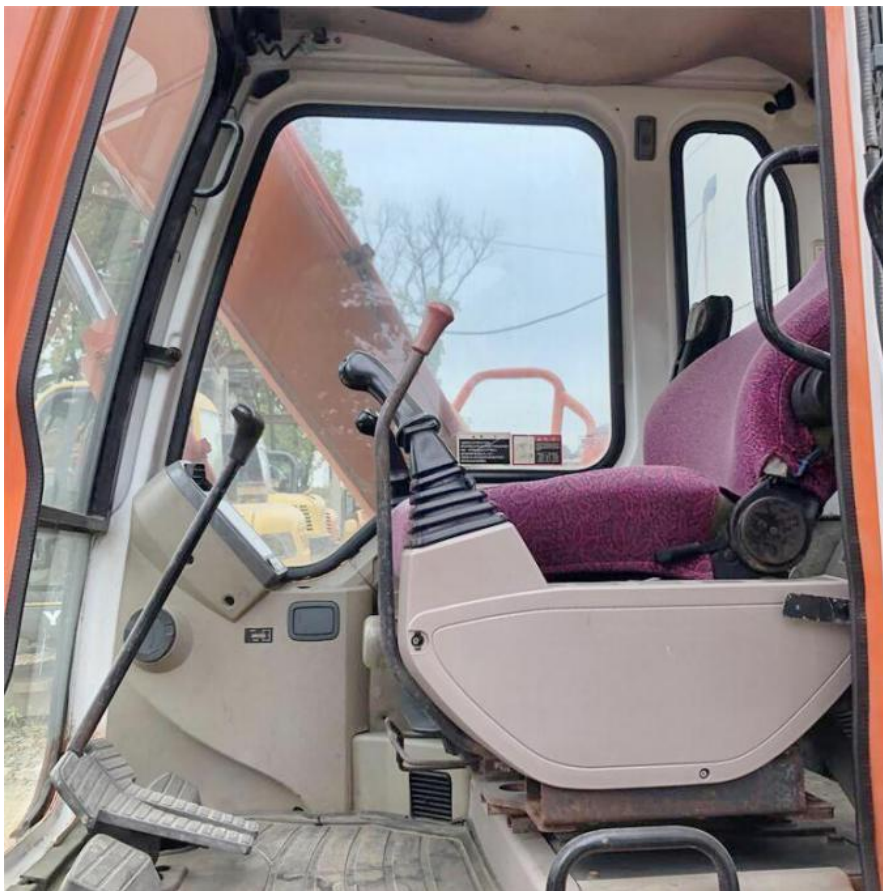
It's the cheapest shipping way. But for big machine, it will be dismantled into many parts to put into the fill in the container. And the buyer needs to assemble after getting the container.

4. Ro-ro vessel.

This transportation method used to be frequently used, but due to the surge in China's new energy vehicle exports, most roll on/roll off ships have been leased by new energy vehicle manufacturers.

Product pictures of Made in Korea original used doosan dh80-7 excavator 8 ton in Shanghai





More models we can supply

Komatsu used excavator	PC20/PC30/PC35/PC40/PC50/PC55/PC56/PC60/PC70/PC75/PC78/PC100/PC1
	10/PC120/PC128/PC130/PC138/PC150/PC160/PC200/PC210/PC220/PC228/PC240/PC270/PC300/PC350/PC360/PC400/PC450/PC460/PC490/PC650

Carter used excavator	CAT303/CAT305/CAT305.5/CAT306/CAT307/CAT308/CAT311/CAT312/CAT313/CAT315/CAT318/CAT320/CAT323/CAT324/CAT325/CAT326/CAT329/CAT330/CAT336/CAT340/CAT345/CAT349/CAT375
Doosan used excavator	DH(DX)35/55/60/70/75/80/150/200/215/220/225/235/260/300/350/370/420/500/530
Sany used excavator	SY16/SY35/SY55/SY60/SY65/SY75/SY85/SY95/SY115/SY135/SY155/SY205/SY215/SY235/SY265/SY305/SY335/SY365
Hitachi used excavator	EX50/EX55/EX60/EX100/EX120/EX200/ZX50/ZX55/ZX60/ZX70/ZX75/ZX120/ZX125/ZX130/ZX135/ZX200/ZX210/ZX230/ZX240/ZX250/ZX270/ZX300/ZX330/ZX350/ZX360/ZX450/ZX600
Kobelco used excavator	SK50/SK55/SK60/SK70/SK75/SK115/SK135/SK140/SK160/SK200/SK210/SK230/SK235/SK250/SK260/SK330/SK350/SK450/SK460
Hyundai used excavator	R55/R60/R70/R75/R80/R110/R115/R130/R150/R200/R205/R210/R220/R225/R245/R305/R375/R420
Kubota used excavator	10/15/16/17/18/20/25/30/35/40/50/155/161/163/165/185
Volvo used excavator	EC55/EC60/EC80/EC140/EC200/EC210/EC240/EC290/EC300/EC360/EC380/EC460/EC480
Excavators of other brands	QAY,CLG,Keith,Takeuchi,Sumitomo,Yanmar,IHI,SUNWARD,Yuchai,Zoomlion

Company Profile

Shanghai Kaishu Machinery Equipment Co., Ltd was established in 2017, we have our own factory which covers an area of 67,000 square meters, with 200 employees. As a leading used excavator supplier in China, Shanghai Kaishu Machinery Equipment Co., Ltd has numerous construction machinery. Our teams are composed of a purchasing team, a technical support team, a vehicle-parts supply center, a foreign trade sales team and a quality testing center.

Our full range of products include: used excavators, used loaders, used graders, used bulldozers, used forklifts, used cranes and other used construction machinery products. Our engineering machines are mainly from China, the United States, Japan, South Korea and other manufacturing countries, quality assurance is our hallmark. Our machines are sold to many regions at home and abroad, and we have rich export experience.

In order to serve our customers better, we deal in three(3) thousand units of construction machinery all year round and ensure delivery within 7-30 days after payment. Our team can serve you around the clock (24/7) and we hope to build a long-term business relationship with you.





Our transaction case



Accessories we can supply



QUALITY FIRST, SERVICE FOREMOST

<https://www.used-crawlerexcavator.com>
<https://shanghaikaishu.en.alibaba.com>

FAQ

1. What's your payment terms and trade terms?

Generally 50% deposit and 50% balance before shipping. Of course, we can negotiate according to your orders. We can accept EXW, FOB, CRF and CIF.

2. How to ship the excavators?

- (1). Container: which is cheapest and fast. but sometime machine need to be dismantled .
- (2). Bulk cargo ship :which is better for bigger construction equipment ,ship as it is.
- (3). Flat rack ship :which is better for bigger machine and also no need to dismantle
- (4). RO RO ship : which is good for every machine and faster

3. Is it convenient to visit you?

You are welcome to visit us. So you can see how many used excavators we have in stock and the condition of them. We can pick you up at Shanghai Air port.



Shanghai Kaishu Machinery Equipment Co., Ltd.



15821620827



18326615374@163.com



[used-crawlerexcavator.com](https://www.used-crawlerexcavator.com)

No.3539 Jingdong Road, Shanghai, China